



CATALOGUE NO. 8635.5
EMBARGOED UNTIL 11.30 A.M. 28 SEPTEMBER 1994

**TOURIST ACCOMMODATION, WESTERN AUSTRALIA
JUNE QUARTER 1994**

MAIN FEATURES

JUNE QUARTER 1994
COMPARED WITH
JUNE QUARTER 1993

HOTELS, MOTELS AND GUEST HOUSES

- Rooms available increased by 2.2 per cent from 17,424 to 17,803 and bed spaces increased by 2.1 per cent to 43,357.
- Room nights occupied increased by 10.3 per cent from 739,614 to 816,146 overall with all statistical divisions recording rises in occupancy ranging from 23.0 per cent for Midlands SD to 2.4 per cent for Lower Great Southern SD.
- The room occupancy rate overall rose from 46.7 per cent to 50.4 per cent. Perth Statistical Division recorded the highest room occupancy rate at 66.1 per cent, an increase of 6.8 percentage points, followed by South Eastern Statistical Division at 53.2 per cent. Midlands Statistical Division recorded the lowest room occupancy rate of 27.0 per cent.
- Guest nights increased by 9.4 per cent from 1,193,515 to 1,305,545 and the bed occupancy rate rose from 30.9 per cent to 33.1 per cent.
- Guest arrivals at hotels, motels and guest houses rose by 7.8 per cent from 497,365 to 535,929 and the average length of stay was unchanged at 2.4 days overall.
- Takings from accommodation increased by 15.6 per cent from \$49.8m to \$57.5m while average takings per room night occupied rose from \$67 to \$70 overall, ranging from \$82 for Perth Statistical Division to \$41 for Midlands Statistical Division.

HOLIDAY FLATS, UNITS AND HOUSES

- The number of units, etc. available for short-term letting increased by 11.6 per cent from 1,993 to 2,224 while unit nights occupied increased by 18.2 per cent from 87,250 to 103,130.
- The unit occupancy rate consequently rose from 48.3 per cent to 51.0 per cent.
- Unit lettings increased by 14.9 per cent from 20,252 to 23,262 and the average length of stay increased from 4.3 days to 4.4 days.
- Accommodation takings rose by 29.9 per cent from \$4.8m to \$6.3m and the average takings per unit night occupied increased from \$55 to \$61.

CARAVAN PARKS

- Caravan park capacity available increased by 3.2 per cent from 28,308 to 29,202 powered and unpowered sites and cabins, etc. of which 5,169 sites, etc. (17.7 per cent) were occupied by long-term residents, 2,260 sites, etc. (7.7 per cent) were permanently reserved but only casually occupied by their tenants and an average of 3,738 sites, etc. (12.8 per cent) were occupied by other short-term guests.
- Site nights occupied rose by 5.0 per cent from 967,530 to 1,016,216 while the site occupancy rate increased from 37.6 per cent to 38.2 per cent.
- Accommodation takings rose by 7.8 per cent from \$10.3m to \$11.1m.

VISITOR HOSTELS

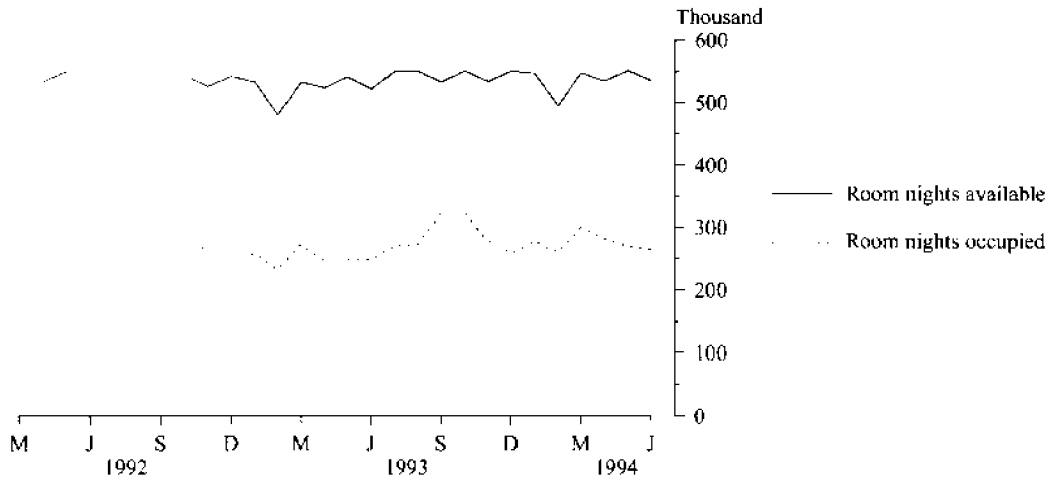
- Bed spaces available rose marginally from 3,112 to 3,119 while guest nights rose by 11.9 per cent from 91,313 to 102,136.
- The bed occupancy rate thus rose from 32.2 per cent to 36.0 per cent with an increase in the average length of stay from 3.1 days to 3.2 days.
- Accommodation takings rose to \$1.1m at an average of \$11 per guest night.

INQUIRIES

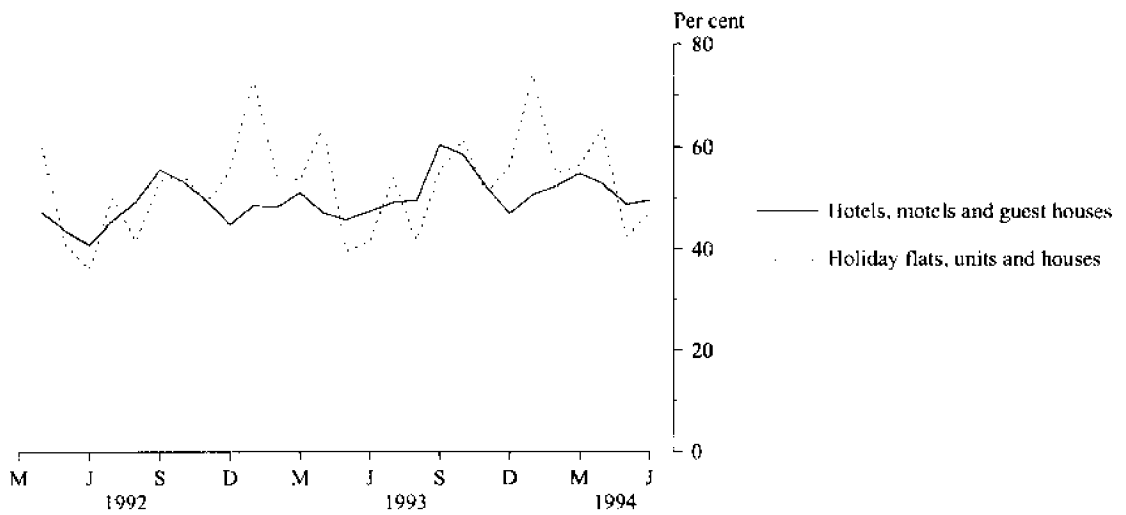
- *for further information about statistics in this publication and the availability of related unpublished statistics, contact Brian Hay on 008 077304 or any ABS office.*

for information about other ABS statistics and services, refer to the back page of this publication.

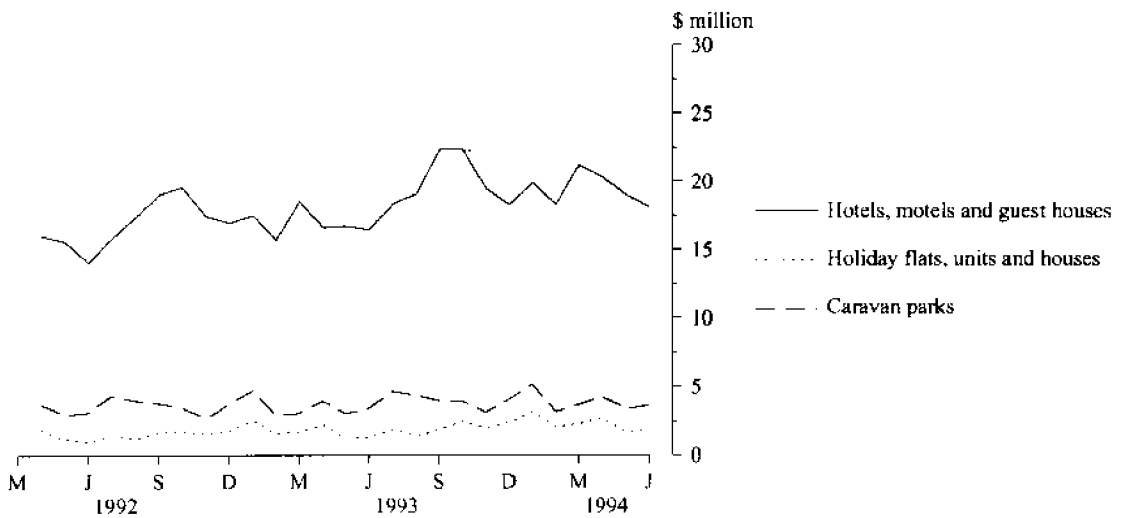
**MONTHLY ROOM NIGHTS AVAILABLE AND OCCUPIED:
HOTELS, MOTELS AND GUEST HOUSES,
WESTERN AUSTRALIA**



**MONTHLY OCCUPANCY RATES,
WESTERN AUSTRALIA**



**MONTHLY TAKINGS FROM ACCOMMODATION,
WESTERN AUSTRALIA**



CONTENTS

<i>Table</i>	<i>Page</i>
.. Main features	1
.. Diagrams	2
1 Summaries of hotels, motels and guest houses, Perth Statistical Division and Western Australia	4
2 Summary of caravan parks, Perth Statistical Division and Western Australia	6
3 Summary of holiday flats, units and houses, Perth Statistical Division and Western Australia	7
4 Summary of visitor hostels, Western Australia	7
5 Hotels, motels and guest houses with facilities by star grading, Perth Statistical Division and Western Australia	8
.. Diagrams	10
6 Hotels, motels and guest houses by statistical division, Western Australia	11
7 Hotels, motels and guest houses with facilities: Statistical divisions and selected statistical local areas, Western Australia	14
8 Holiday flats, units and houses by statistical division, Western Australia	16
9 Holiday flats, units and houses by selected statistical local areas, Western Australia	17
10 Caravan parks: Statistical divisions and selected statistical local areas, Western Australia	18
11 Caravan parks by statistical division, Western Australia	20
12 Visitor hostels by statistical division, Western Australia	23
.. Explanatory Notes	24
.. Reference map – statistical divisions of Western Australia	27

TABLE 1 — SUMMARIES OF HOTELS, MOTELS AND GUEST HOUSES,
PERTH STATISTICAL DIVISION AND WESTERN AUSTRALIA (a)

Particulars	Unit	Quarter ended				Year ended			
		March 1993	June 1993	September 1993	December 1993	March 1994	June 1994	June 1993	June 1994
PERTH STATISTICAL DIVISION — HOTELS, MOTELS AND GUEST HOUSES WITH FACILITIES									
Establishments	No.	86	86	86	87	87	87
Guest rooms	No.	6,665	6,742	6,743	6,780	6,776	6,769
Bed spaces	No.	16,906	17,140	17,148	17,236	17,272	17,274
Employment (persons)	No.	5,471	5,289	5,282	5,631	5,589	5,322
Room nights occupied	No.	405,328	370,792	417,375	446,283	444,490	412,984	1,574,833	1,721,132
Room occupancy rate	per cent	67.6	60.4	67.3	71.5	72.9	67.0	64.2	69.7
Guest nights	No.	682,671	606,690	684,608	749,202	746,907	668,383	2,603,471	2,849,100
Bed occupancy rate	per cent	44.9	38.9	43.4	47.2	48.0	42.5	42.3	45.3
Guest arrivals	No.	238,628	222,406	254,243	280,128	261,064	245,078	912,016	1,040,513
Average length of stay	days	2.9	2.7	2.7	2.7	2.9	2.7	2.9	2.7
Takings from accommodation	\$'000	33,093	29,739	34,256	37,660	37,992	34,768	125,758	144,676
WESTERN AUSTRALIA — LICENSED HOTELS WITH FACILITIES									
Establishments	No.	159	162	160	161	162	161
Guest rooms	No.	8,021	8,107	8,118	8,158	8,189	8,185
Bed spaces	No.	19,352	19,650	19,718	19,803	19,893	19,996
Employment (persons)	No.	6,891	6,681	6,768	7,149	7,044	6,836
Room nights occupied	No.	382,367	375,572	441,769	443,800	422,925	420,285	1,574,518	1,728,779
Room occupancy rate	per cent	53.0	51.0	59.2	59.1	57.5	56.4	53.3	58.1
Guest nights	No.	606,476	582,639	686,763	709,306	664,480	640,503	2,455,070	2,701,052
Bed occupancy rate	per cent	34.9	32.6	37.9	38.9	37.2	35.2	34.8	37.3
Guest arrivals	No.	252,544	247,963	313,710	302,729	263,754	268,870	1,054,933	1,149,063
Average length of stay	days	2.4	2.3	2.2	2.3	2.5	2.4	2.3	2.4
Takings from accommodation	\$'000	31,183	29,514	35,537	36,830	36,001	34,832	124,215	143,199
WESTERN AUSTRALIA — MOTELS AND GUEST HOUSES WITH FACILITIES									
Establishments	No.	161	166	166	167	168	173
Guest rooms	No.	6,454	6,470	6,493	6,536	6,531	6,569
Bed spaces	No.	17,940	17,971	17,960	18,199	18,312	18,300
Employment (persons)	No.	2,354	2,341	2,533	2,475	2,550	2,614
Room nights occupied	No.	305,591	292,019	340,477	331,609	330,809	312,732	1,218,840	1,315,627
Room occupancy rate	per cent	52.6	49.6	57.0	55.1	56.3	52.5	51.6	55.2
Guest nights	No.	571,942	516,772	612,053	602,524	623,497	562,493	2,218,640	2,400,567
Bed occupancy rate	per cent	35.4	31.6	37.0	36.0	37.9	33.8	33.8	36.2
Guest arrivals	No.	227,960	216,412	256,066	261,075	253,069	234,575	910,266	1,004,785
Average length of stay	days	2.5	2.4	2.4	2.3	2.5	2.4	2.4	2.4
Takings from accommodation	\$'000	18,677	18,237	21,826	20,763	20,976	20,134	75,286	83,699
WESTERN AUSTRALIA — TOTAL HOTELS, MOTELS AND GUEST HOUSES WITH FACILITIES									
Establishments	No.	320	328	326	328	330	334
Guest rooms	No.	14,475	14,577	14,611	14,694	14,720	14,754
Bed spaces	No.	37,292	37,621	37,678	38,002	38,205	38,296
Employment (persons)	No.	9,245	9,022	9,301	9,624	9,594	9,450
Room nights occupied	No.	687,958	667,591	782,246	775,409	753,734	733,017	2,793,358	3,044,406
Room occupancy rate	per cent	52.8	50.4	58.2	57.4	57.0	54.7	52.6	56.8
Guest nights	No.	1,178,418	1,099,411	1,298,816	1,311,830	1,287,977	1,202,996	4,673,710	5,101,619
Bed occupancy rate	per cent	35.1	32.1	37.5	37.5	37.5	34.5	34.3	36.8
Guest arrivals	No.	480,504	464,375	569,776	563,804	516,823	503,445	1,965,199	2,153,848
Average length of stay	days	2.5	2.4	2.3	2.3	2.5	2.4	2.4	2.4
Takings from accommodation	\$'000	49,860	47,751	57,364	57,593	56,977	54,966	199,501	226,899

TABLE 1 — SUMMARIES OF HOTELS, MOTELS AND GUEST HOUSES,
PERTH STATISTICAL DIVISION AND WESTERN AUSTRALIA (a) *continued*

Particulars	Unit	Quarter ended				Year ended			
		March 1993	June 1993	September 1993	December 1993	March 1994	June 1994	June 1993	June 1994
PERTH STATISTICAL DIVISION — HOTELS, MOTELS AND GUEST HOUSES WITHOUT FACILITIES									
Establishments	No.	8	10	10	9	8	9
Guest rooms	No.	326	362	363	357	338	338
Bed spaces	No.	493	564	566	561	501	532
Employment (persons)	No.	272	296	278	282	268	258
Room nights occupied	No.	13,781	12,306	13,994	15,024	16,574	14,528	50,912	60,120
Room occupancy rate	per cent	47.0	37.4	41.9	45.7	54.5	47.2	42.8	47.2
Guest nights	No.	17,821	16,059	17,933	19,242	21,566	17,932	65,051	76,673
Bed occupancy rate	per cent	40.2	31.3	34.4	37.3	47.8	37.0	36.5	38.9
Guest arrivals	No.	5,250	4,983	5,311	5,579	6,106	4,644	19,195	21,640
Average length of stay	days	3.4	3.2	3.4	3.4	3.5	3.9	3.4	3.5
Takings from accommodation	\$'000	318	290	324	376	393	326	1,196	1,419
WESTERN AUSTRALIA — HOTELS, MOTELS AND GUEST HOUSES WITHOUT FACILITIES									
Establishments	No.	123	136	135	129	128	136
Guest rooms	No.	2,667	2,847	3,109	3,055	2,930	3,049
Bed spaces	No.	4,505	4,830	5,024	4,959	4,802	5,061
Employment (persons)	No.	1,045	1,085	1,133	1,023	999	1,023
Room nights occupied	No.	72,113	72,023	81,322	82,654	81,035	83,129	303,345	328,140
Room occupancy rate	per cent	30.0	27.9	28.5	29.4	30.7	30.0	29.5	29.6
Guest nights	No.	94,895	94,104	103,023	103,970	106,223	102,549	387,464	415,765
Bed occupancy rate	per cent	23.4	21.5	22.4	22.8	24.6	22.3	22.8	23.0
Guest arrivals	No.	33,191	32,990	36,694	35,534	34,523	32,484	137,241	139,235
Average length of stay	days	2.9	2.9	2.8	2.9	3.1	3.2	2.8	3.0
Takings from accommodation	\$'000	1,908	2,007	2,457	2,550	2,426	2,547	8,182	9,980
PERTH STATISTICAL DIVISION — TOTAL HOTELS, MOTELS AND GUEST HOUSES									
Establishments	No.	94	96	96	96	95	96
Guest rooms	No.	6,991	7,104	7,106	7,137	7,114	7,107
Bed spaces	No.	17,399	17,704	17,714	17,797	17,773	17,806
Employment (persons)	No.	5,743	5,585	5,560	5,913	5,857	5,580
Room nights occupied	No.	419,109	383,098	431,369	461,307	461,064	427,512	1,625,745	1,781,252
Room occupancy rate	per cent	66.7	59.3	66.0	70.3	72.0	66.1	63.2	68.6
Guest nights	No.	700,492	622,749	702,541	768,444	768,473	686,315	2,668,522	2,925,773
Bed occupancy rate	per cent	44.8	38.7	43.1	46.9	48.0	42.4	42.1	45.1
Guest arrivals	No.	243,878	227,389	259,554	285,707	267,170	249,722	931,211	1,062,153
Average length of stay	days	2.9	2.7	2.7	2.7	2.9	2.7	2.9	2.8
Takings from accommodation	\$'000	33,410	30,029	34,580	38,036	38,385	35,094	126,954	146,095
WESTERN AUSTRALIA TOTAL HOTELS, MOTELS AND GUEST HOUSES									
Establishments	No.	443	464	461	457	458	470
Guest rooms	No.	17,142	17,424	17,720	17,749	17,650	17,803
Bed spaces	No.	41,797	42,451	42,702	42,961	43,007	43,357
Employment (persons)	No.	10,290	10,107	10,434	10,647	10,593	10,473
Room nights occupied	No.	760,071	739,614	863,568	858,063	834,769	816,146	3,096,703	3,372,546
Room occupancy rate	per cent	49.3	46.7	53.0	52.5	52.6	50.4	48.8	52.2
Guest nights	No.	1,273,313	1,193,515	1,401,839	1,415,800	1,394,200	1,305,545	5,061,174	5,517,384
Bed occupancy rate	per cent	33.9	30.9	35.7	35.8	36.1	33.1	33.0	35.2
Guest arrivals	No.	513,695	497,365	606,470	599,338	551,346	535,929	2,102,440	2,293,083
Average length of stay	days	2.5	2.4	2.3	2.4	2.5	2.4	2.4	2.4
Takings from accommodation	\$'000	51,768	49,758	59,821	60,143	59,402	57,513	207,683	236,879

(a) From December quarter 1993, establishments with fewer than 5 rooms have been formally excluded from the scope of this collection. See Explanatory Note 2 (page 24).

TABLE 2 — SUMMARY OF CARAVAN PARKS, PERTH STATISTICAL DIVISION AND WESTERN AUSTRALIA

Particulars	Unit	Quarter ended				Year ended			
		March 1993	June 1993	September 1993	December 1993	March 1994	June 1994	June 1993	June 1994
PERTH STATISTICAL DIVISION — CARAVAN PARKS									
Establishments	No.	34	34	35	35	34	34
Capacity									
On-site vans	No.	472	463	442	434	424	429
Other powered sites	No.	2,839	2,855	2,838	2,881	2,858	2,907
Unpowered sites	No.	494	496	516	446	452	532
Cabins, etc.	No.	159	163	170	206	211	219
<i>Total capacity</i>	<i>No.</i>	<i>3,964</i>	<i>3,977</i>	<i>3,966</i>	<i>3,967</i>	<i>3,945</i>	<i>4,087</i>
Sites occupied by long-term guests	No.	1,703	1,685	1,695	1,751	1,860	1,859
Other sites permanently reserved	No.	169	174	175	118	121	108
Employment (persons)	No.	141	141	139	146	144	139
Site nights occupied	No.	209,709	200,411	210,318	198,590	210,590	212,456	816,604	831,954
Site occupancy rate	per cent	58.8	55.4	57.6	54.4	59.3	57.1	56.5	57.1
Guest arrivals	No.	12,701	8,049	9,594	8,622	18,162	23,345	37,806	59,723
Takings from accommodation	\$'000	2,087	1,991	2,173	2,309	2,396	2,311	8,153	9,189
WESTERN AUSTRALIA — SHORT-TERM CARAVAN PARKS									
Establishments	No.	185	187	197	199	198	198
Capacity									
On-site vans	No.	1,072	1,058	1,144	1,167	1,173	1,166
Other powered sites	No.	10,554	10,622	11,468	11,657	11,838	12,024
Unpowered sites	No.	3,984	3,928	3,988	4,005	4,018	4,024
Cabins, etc.	No.	801	807	820	838	843	860
<i>Total capacity</i>	<i>No.</i>	<i>16,411</i>	<i>16,415</i>	<i>17,420</i>	<i>17,667</i>	<i>17,872</i>	<i>18,074</i>
Sites occupied by long-term guests	No.	918	1,058	1,228	1,175	1,221	1,269
Other sites permanently reserved	No.	1,588	1,595	1,914	1,974	1,937	1,981
Employment (persons)	No.	632	643	665	696	690	711
Site nights occupied	No.	488,252	467,953	638,120	514,501	563,264	543,653	1,970,665	2,259,538
Site occupancy rate	per cent	33.1	31.3	40.0	31.7	35.1	33.1	32.4	34.9
Guest arrivals	No.	218,928	211,690	285,641	210,022	262,876	224,308	923,612	982,847
Takings from accommodation	\$'000	5,650	5,204	7,100	5,796	6,665	5,760	22,594	25,321
WESTERN AUSTRALIA — LONG-TERM CARAVAN PARKS									
Establishments	No.	119	119	117	113	113	113
Capacity									
On-site vans	No.	1,198	1,209	1,070	1,070	1,087	1,082
Other powered sites	No.	8,171	8,219	7,567	7,391	7,413	7,445
Unpowered sites	No.	2,026	1,942	1,945	1,900	1,880	2,020
Cabins, etc.	No.	498	523	532	564	565	581
<i>Total capacity</i>	<i>No.</i>	<i>11,893</i>	<i>11,893</i>	<i>11,114</i>	<i>10,925</i>	<i>10,945</i>	<i>11,128</i>
Sites occupied by long-term guests	No.	3,888	3,823	3,777	3,698	3,833	3,900
Other sites permanently reserved	No.	602	589	277	259	273	279
Employment (persons)	No.	418	422	396	388	390	403
Site nights occupied	No.	489,627	499,577	502,322	447,835	451,516	472,563	1,983,133	1,874,236
Site occupancy rate	per cent	45.8	46.2	49.1	44.6	45.8	46.7	47.2	46.6
Guest arrivals	No.	58,556	70,261	86,823	49,840	53,746	77,177	270,480	267,586
Takings from accommodation	\$'000	5,048	5,129	5,725	5,245	5,290	5,375	20,250	21,635
WESTERN AUSTRALIA — TOTAL CARAVAN PARKS									
Establishments	No.	304	306	314	312	311	311
Capacity									
On-site vans	No.	2,270	2,267	2,214	2,237	2,260	2,248
Other powered sites	No.	18,725	18,841	19,035	19,048	19,251	19,469
Unpowered sites	No.	6,010	5,870	5,933	5,905	5,898	6,044
Cabins, etc.	No.	1,299	1,330	1,352	1,402	1,408	1,441
<i>Total capacity</i>	<i>No.</i>	<i>28,304</i>	<i>28,308</i>	<i>28,534</i>	<i>28,592</i>	<i>28,817</i>	<i>29,202</i>
Sites occupied by long-term guests	No.	4,806	4,881	5,005	4,873	5,054	5,169
Other sites permanently reserved	No.	2,190	2,184	2,191	2,233	2,210	2,260
Employment (persons)	No.	1,050	1,065	1,061	1,084	1,080	1,114
Site nights occupied	No.	977,879	967,530	1,140,442	962,336	1,014,780	1,016,216	3,953,798	4,133,774
Site occupancy rate	per cent	38.4	37.6	43.5	36.6	39.2	38.2	38.4	39.4
Guest arrivals	No.	277,484	281,951	372,464	259,862	316,622	301,485	1,194,092	1,250,433
Takings from accommodation	\$'000	10,698	10,333	12,825	11,041	11,954	11,135	42,843	46,956

TABLE 3 — SUMMARY OF HOLIDAY FLATS, UNITS AND HOUSES,
PERTH STATISTICAL DIVISION AND WESTERN AUSTRALIA

Particulars	Unit	Quarter ended				Year ended			
		March 1993	June 1993	September 1993	December 1993	March 1994	June 1994	June 1993	June 1994
PERTH STATISTICAL DIVISION									
Letting entities	No.	30	30	30	30	30	29
Flats, units and houses	No.	385	397	398	380	383	390
Single bedroom	No.	543	629	684	700	711	733
Multiple bedroom	No.
Total flats, units and houses	No.	928	1,026	1,082	1,080	1,094	1,123
Bed spaces	No.	3,764	4,198	4,386	4,494	4,417	4,632
Employment (persons) (a)	No.	218	218	204	227	230	224
Unit nights occupied	No.	60,505	51,988	55,571	66,855	74,475	60,762	213,310	257,663
Unit occupancy rate	per cent	73.0	56.1	55.8	67.3	75.6	59.5	60.4	64.5
Unit lettings	No.	10,591	9,794	9,843	12,459	12,688	11,203	41,194	46,193
Average length of stay	days	5.7	5.3	5.6	5.4	5.9	5.4	5.2	5.6
Takings from accommodation	\$'000	3,343	2,865	3,005	4,221	4,589	3,812	11,472	15,628
WESTERN AUSTRALIA									
Letting entities	No.	98	99	106	107	107	106
Flats, units and houses	No.	510	511	527	563	558	569
Single bedroom	No.	1,417	1,482	1,570	1,627	1,640	1,655
Multiple bedroom	No.
Total flats, units and houses	No.	1,927	1,993	2,097	2,190	2,198	2,224
Bed spaces	No.	9,055	9,245	9,874	10,378	10,249	10,501
Employment (persons) (a)	No.	443	430	440	474	471	485
Unit nights occupied	No.	104,288	87,250	96,779	113,238	122,718	103,130	370,309	435,865
Unit occupancy rate	per cent	60.5	48.3	50.2	56.2	62.0	51.0	52.4	54.9
Unit lettings	No.	21,310	20,252	22,585	25,623	24,606	23,262	85,576	96,076
Average length of stay	days	4.9	4.3	4.3	4.4	5.0	4.4	4.3	4.5
Takings from accommodation	\$'000	5,829	4,836	5,153	6,915	7,584	6,283	20,096	25,935

(a) Employment numbers exclude real estate agents and their employees.

TABLE 4 — SUMMARY OF VISITOR HOSTELS, WESTERN AUSTRALIA

Particulars	Unit	Quarter ended				Year ended			
		March 1993	June 1993	September 1993	December 1993	March 1994	June 1994	June 1993	June 1994
Establishments	No.	47	51	52	54	54	57
Bed spaces	No.	2,792	3,112	2,841	2,993	3,068	3,119
Employment (persons)	No.	136	143	146	138	135	150
Guest nights	No.	108,330	91,313	96,456	103,780	113,992	102,136	386,061	416,364
Bed occupancy rate	per cent	43.1	32.2	36.9	37.7	41.9	36.0	35.5	38.1
Guest arrivals	No.	30,756	29,320	28,461	37,881	37,941	32,326	125,395	136,609
Average length of stay	days	3.5	3.1	3.4	2.7	3.0	3.2	3.1	3.0
Takings from accommodation	\$'000	1,112	1,031	1,038	1,073	1,228	1,115	4,062	4,453

TABLE 5—HOTELS, MOTELS AND GUEST HOUSES WITH FACILITIES BY STAR GRADING,
PERTH STATISTICAL DIVISION AND WESTERN AUSTRALIA (a)

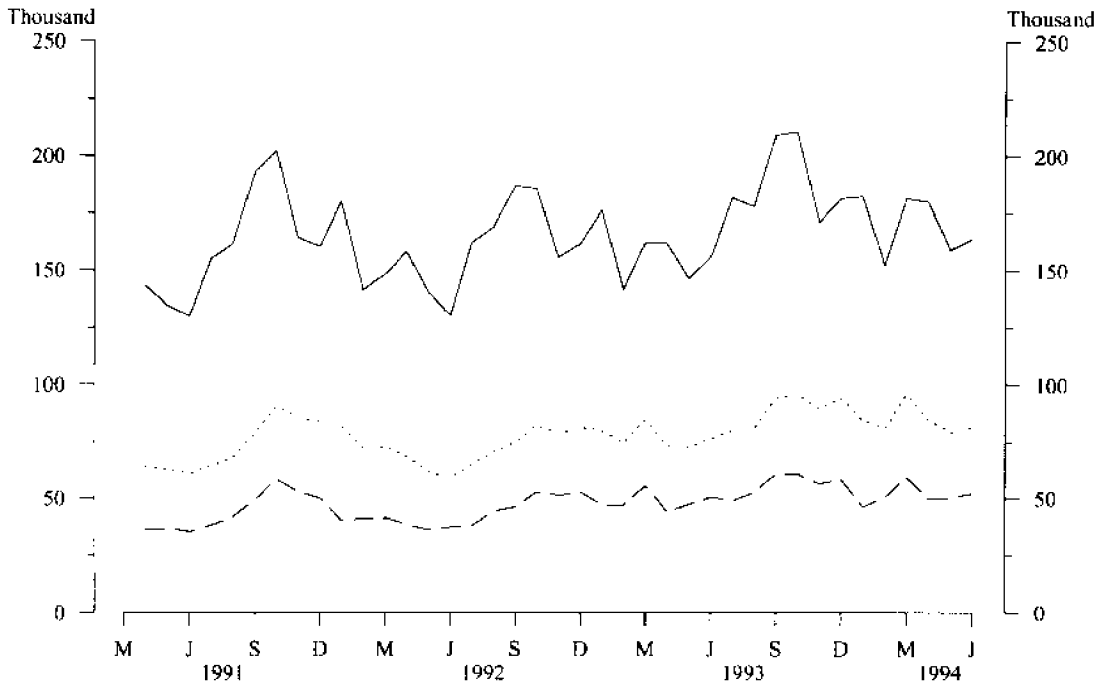
<i>Perth Statistical Division</i>					
<i>Particulars</i>	<i>Star grading</i>				<i>Total</i>
	<i>1 and 2</i>	<i>3</i>	<i>4 and 5</i>	<i>Ungraded</i>	
ESTABLISHMENTS, CAPACITY AND EMPLOYMENT					
<i>June quarter 1993—</i>					
Establishments	24	30	14	18	86
Guest rooms	1,018	2,222	3,038	464	6,742
Bed spaces	2,713	5,958	7,330	1,139	17,140
Employment (persons)	447	1,145	3,237	460	5,289
<i>June quarter 1994—</i>					
Establishments	26	31	14	16	87
Guest rooms	1,016	2,325	3,037	391	6,769
Bed spaces	2,760	6,299	7,338	877	17,274
Employment (persons)	487	1,164	3,283	388	5,322
ROOM NIGHTS OCCUPIED					
<i>June quarter 1993</i>	<i>45,899</i>	<i>126,934</i>	<i>179,440</i>	<i>18,519</i>	<i>370,792</i>
<i>1994</i>					
April	17,666	48,451	68,995	6,659	141,771
May	15,509	47,452	68,736	6,213	137,910
June	16,440	46,473	64,568	5,822	133,303
<i>June quarter 1994</i>	<i>49,615</i>	<i>142,376</i>	<i>202,299</i>	<i>18,694</i>	<i>412,984</i>
ROOM OCCUPANCY RATES (per cent)					
<i>June quarter 1993</i>	<i>49.5</i>	<i>62.8</i>	<i>64.9</i>	<i>43.9</i>	<i>60.4</i>
<i>1994—</i>					
April	58.0	69.5	75.7	56.8	69.8
May	49.2	65.8	73.0	51.3	65.7
June	53.9	66.6	70.9	49.6	65.6
<i>June quarter 1994</i>	<i>53.7</i>	<i>67.3</i>	<i>73.2</i>	<i>52.5</i>	<i>67.0</i>
GUEST NIGHTS					
<i>June quarter 1993</i>	<i>79,850</i>	<i>226,170</i>	<i>272,634</i>	<i>28,036</i>	<i>606,690</i>
<i>1994—</i>					
April	31,014	93,723	104,230	9,670	238,637
May	25,524	82,312	98,842	8,543	215,221
June	27,457	83,442	95,155	8,471	214,525
<i>June quarter 1994</i>	<i>83,995</i>	<i>259,477</i>	<i>298,227</i>	<i>26,684</i>	<i>668,383</i>
BED OCCUPANCY RATES (per cent)					
<i>June quarter 1993</i>	<i>32.3</i>	<i>41.7</i>	<i>40.9</i>	<i>27.0</i>	<i>38.9</i>
<i>1994</i>					
April	37.5	49.6	47.3	36.8	46.0
May	29.8	42.2	43.5	31.4	40.2
June	33.2	44.2	43.2	32.2	41.4
<i>June quarter 1994</i>	<i>33.4</i>	<i>45.3</i>	<i>44.7</i>	<i>33.4</i>	<i>42.5</i>
GUEST ARRIVALS					
<i>June quarter 1993</i>	<i>28,920</i>	<i>70,100</i>	<i>113,517</i>	<i>9,869</i>	<i>222,406</i>
<i>1994—</i>					
April	11,950	26,562	42,861	3,086	84,459
May	10,114	24,257	42,427	2,514	79,312
June	10,640	24,461	43,547	2,659	81,307
<i>June quarter 1994</i>	<i>32,704</i>	<i>75,280</i>	<i>128,835</i>	<i>8,259</i>	<i>245,078</i>
AVERAGE LENGTH OF STAY (days)					
<i>June quarter 1993</i>	<i>2.8</i>	<i>3.2</i>	<i>2.4</i>	<i>2.8</i>	<i>2.7</i>
<i>June quarter 1994</i>	<i>2.6</i>	<i>3.4</i>	<i>2.3</i>	<i>3.2</i>	<i>2.7</i>
TAKINGS FROM ACCOMMODATION (\$'000)					
<i>June quarter 1993</i>	<i>2,271</i>	<i>7,630</i>	<i>19,108</i>	<i>731</i>	<i>29,739</i>
<i>1994—</i>					
April	933	3,312	7,771	231	12,247
May	798	2,983	7,656	198	11,635
June	845	2,872	6,978	190	10,886
<i>June quarter 1994</i>	<i>2,576</i>	<i>9,168</i>	<i>22,405</i>	<i>619</i>	<i>34,768</i>

TABLE 5—HOTELS, MOTELS AND GUEST HOUSES WITH FACILITIES BY STAR GRADING,
PERTH STATISTICAL DIVISION AND WESTERN AUSTRALIA (a)—continued

Particulars	Western Australia						Total
	Star grading						
	1	2	3	4	5	Ungraded	
ESTABLISHMENTS, CAPACITY AND EMPLOYMENT							
<i>June quarter 1993—</i>							
Establishments	10	125	108	9	8	68	328
Guest rooms	172	3,654	5,778	962	2,331	1,680	14,577
Bed spaces	372	9,245	15,742	2,724	5,571	3,967	37,621
Employment (persons)	156	1,617	2,794	1,098	2,368	989	9,022
<i>June quarter 1994—</i>							
Establishments	11	123	114	11	9	66	334
Guest rooms	180	3,451	6,169	893	2,424	1,637	14,754
Bed spaces	376	8,747	16,962	2,324	6,031	3,856	38,296
Employment (persons)	142	1,649	2,929	1,117	2,460	1,153	9,450
ROOM NIGHTS OCCUPIED							
<i>June quarter 1993</i>	4,408	136,424	282,457	60,516	130,228	53,558	667,591
<i>1994—</i>							
April	1,929	49,758	106,611	21,335	53,249	20,449	253,331
May	1,653	44,958	103,125	20,612	51,718	19,633	241,699
June	1,472	44,388	103,036	19,644	48,724	20,723	237,987
<i>June quarter 1994</i>	5,054	139,104	312,772	61,591	153,691	60,805	733,017
ROOM OCCUPANCY RATES (per cent)							
<i>June quarter 1993</i>	28.2	41.2	53.7	69.1	61.4	35.1	50.4
<i>1994—</i>							
April	35.7	48.1	57.6	79.6	73.2	42.1	57.3
May	29.6	42.1	53.9	74.5	68.8	39.1	52.9
June	27.3	42.9	55.7	73.3	67.0	42.6	53.8
<i>June quarter 1994</i>	30.9	44.3	55.7	75.8	69.7	41.3	54.7
GUEST NIGHTS							
<i>June quarter 1993</i>	6,801	222,767	484,277	98,596	198,277	88,693	1,099,411
<i>1994</i>							
April	2,941	84,442	202,154	33,964	85,350	33,557	442,408
May	2,361	68,403	168,835	31,214	75,008	30,867	376,688
June	2,103	69,225	175,017	28,762	74,666	34,127	383,900
<i>June quarter 1994</i>	7,405	222,070	546,006	93,940	235,024	98,551	1,202,996
BED OCCUPANCY RATES (per cent)							
<i>June quarter 1993</i>	20.1	26.6	33.8	39.8	39.1	24.6	32.1
<i>1994</i>							
April	26.1	32.2	39.7	48.7	47.2	29.2	38.5
May	20.3	25.3	32.1	43.3	40.1	26.0	31.8
June	18.6	26.4	34.4	41.3	41.3	29.6	33.4
<i>June quarter 1994</i>	21.6	27.9	35.4	44.4	42.8	28.2	34.5
GUEST ARRIVALS							
<i>June quarter 1993</i>	3,129	105,539	198,895	38,066	85,187	33,559	464,375
<i>1994—</i>							
April	1,366	41,124	77,858	12,329	35,085	12,729	180,491
May	1,000	33,347	68,395	11,860	33,660	10,793	159,055
June	1,014	33,551	70,610	11,063	35,725	11,936	163,899
<i>June quarter 1994</i>	3,380	108,022	216,863	35,252	104,470	35,458	503,445
AVERAGE LENGTH OF STAY (days)							
<i>June quarter 1993</i>	2.2	2.1	2.4	2.6	2.3	2.6	2.4
<i>June quarter 1994</i>	2.2	2.1	2.5	2.7	2.2	2.8	2.4
TAKINGS FROM ACCOMMODATION (\$'000)							
<i>June quarter 1993</i>	138	6,698	17,786	5,801	14,412	2,915	47,751
<i>1994—</i>							
April	58	2,530	7,331	2,205	6,202	1,120	19,446
May	46	2,223	6,669	2,120	5,880	1,257	18,196
June	46	2,268	6,621	2,007	5,349	1,031	17,323
<i>June quarter 1994</i>	150	7,022	20,621	6,333	17,432	3,409	54,966

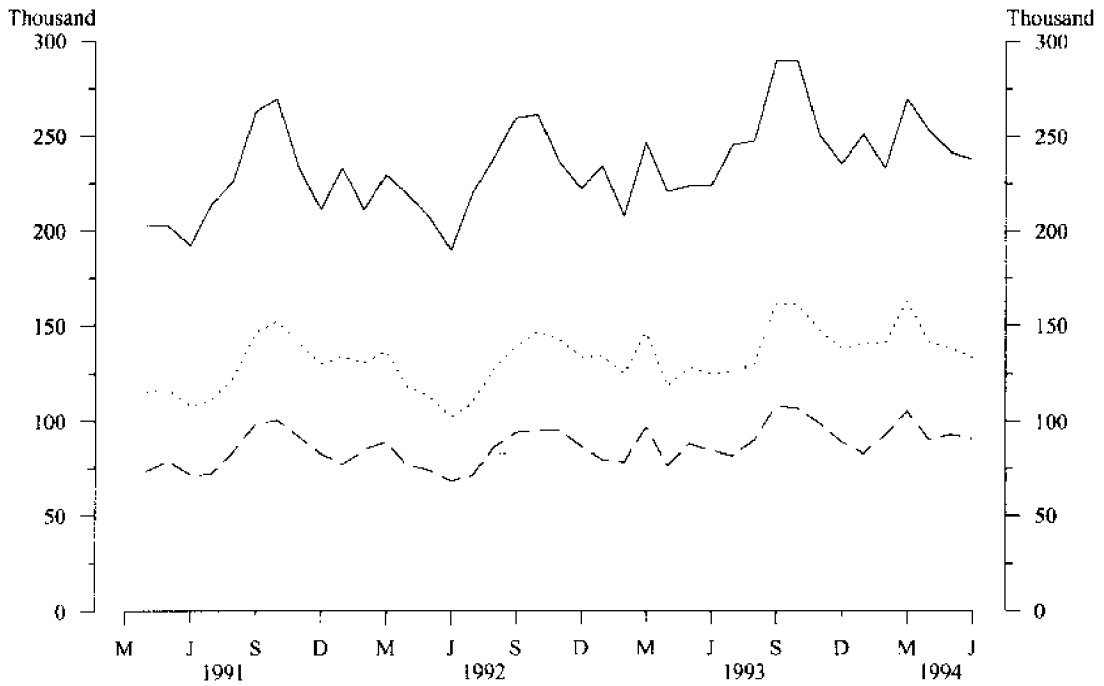
(a) From December quarter 1993, establishments with fewer than 5 rooms have been formally excluded from the scope of this collection. See Explanatory Note 2 (page 24).

**MONTHLY GUEST ARRIVALS,
HOTELS, MOTELS AND GUEST HOUSES WITH FACILITIES**



— Western Australia
 Perth Statistical Division
 - - - Perth City

**MONTHLY ROOM NIGHTS OCCUPIED,
HOTELS, MOTELS AND GUEST HOUSES WITH FACILITIES**



— Western Australia
 Perth Statistical Division
 - - - Perth City

TABLE 6—HOTELS, MOTELS AND GUEST HOUSES BY STATISTICAL DIVISION,
WESTERN AUSTRALIA (a)

Particulars	Perth (SD)				South-West (SD)			Lower Great Southern (SD)				
	Establishments with facilities		Estab. without facilities	Total	Establishments with facilities		Estab. without facilities	Total	Establishments with facilities		Estab. without facilities	Total
	Licensed hotels	Motels, etc.			Licensed hotels	Motels, etc.			Licensed hotels	Motels, etc.		
ESTABLISHMENTS, CAPACITY AND EMPLOYMENT												
<i>June quarter 1993—</i>												
Establishments	46	40	10	96	22	43	32	97	7	18	16	41
Guest rooms	4,334	2,408	362	7,104	734	1,284	417	2,435	167	569	263	999
Bed spaces	10,564	6,576	564	17,704	1,916	3,903	832	6,651	374	1,578	489	2,441
Employment (persons)	4,312	977	296	5,585	639	444	248	1,331	88	139	130	357
<i>June quarter 1994—</i>												
Establishments	44	43	9	96	26	45	28	99	5	18	20	43
Guest rooms	4,316	2,453	338	7,107	824	1,295	365	2,484	149	563	268	980
Bed spaces	10,512	6,762	532	17,806	2,191	3,946	737	6,874	341	1,552	500	2,393
Employment (persons)	4,262	1,060	258	5,580	750	504	199	1,453	83	143	122	348
ROOM NIGHTS OCCUPIED												
<i>June quarter 1993</i>	237,083	133,709	12,306	383,098	24,501	49,917	11,439	85,857	4,373	19,226	5,445	29,044
<i>1994—</i>												
April	90,288	51,483	5,063	146,834	11,956	21,758	3,921	37,635	1,982	8,354	2,214	12,550
May	89,974	47,936	5,100	143,010	8,175	15,384	3,014	26,573	1,390	5,905	1,573	8,868
June	85,403	47,900	4,365	137,668	8,151	14,629	2,622	25,402	1,450	5,476	1,401	8,327
<i>June quarter 1994</i>	265,665	147,319	14,528	427,512	28,282	51,771	9,557	89,610	4,822	19,735	5,188	29,745
ROOM OCCUPANCY RATES (per cent)												
<i>June quarter 1993</i>	60.1	61.0	37.4	59.3	36.7	42.7	30.4	38.8	28.8	37.1	22.9	32.0
<i>1994—</i>												
April	69.7	70.0	49.9	68.9	48.4	56.0	35.8	50.5	44.3	49.5	27.5	42.7
May	67.2	63.0	48.7	64.9	32.0	38.4	26.6	34.6	30.1	33.8	18.9	29.2
June	66.0	65.1	43.0	64.6	33.0	37.7	23.9	34.1	32.4	32.4	17.4	28.3
<i>June quarter 1994</i>	67.6	66.0	47.2	66.1	37.7	44.0	28.8	39.7	35.6	38.5	21.3	33.4
GUEST NIGHTS												
<i>June quarter 1993</i>	374,838	231,852	16,059	622,749	40,471	102,293	17,813	160,577	7,833	33,628	8,075	49,536
<i>1994—</i>												
April	144,347	94,290	6,398	245,035	23,286	51,969	6,513	81,768	3,507	16,746	3,457	23,710
May	134,426	80,795	6,085	221,306	13,253	30,329	4,483	48,065	2,309	9,323	2,112	13,744
June	131,500	83,025	5,449	219,974	13,812	30,631	3,949	48,392	2,432	9,448	2,042	13,922
<i>June quarter 1994</i>	410,273	258,110	17,932	686,315	50,351	112,929	14,945	178,225	8,248	35,517	7,611	51,376
BED OCCUPANCY RATES (per cent)												
<i>June quarter 1993</i>	39.0	38.7	31.3	38.7	23.2	28.8	23.7	26.6	23.0	23.4	18.3	22.3
<i>1994—</i>												
April	45.8	46.5	40.1	45.9	35.4	43.9	29.5	39.7	34.3	36.0	23.0	33.0
May	41.3	38.5	36.9	40.1	19.5	24.9	19.6	22.6	21.8	19.4	13.6	18.5
June	41.7	40.9	34.1	41.2	21.0	25.9	17.9	23.5	23.8	20.3	13.6	19.4
<i>June quarter 1994</i>	42.9	41.9	37.0	42.4	25.3	31.5	22.3	28.5	26.6	25.1	16.7	23.6
GUEST ARRIVALS												
<i>June quarter 1993</i>	145,558	76,848	4,983	227,389	23,034	50,522	7,494	81,050	4,089	18,716	3,907	26,712
<i>1994—</i>												
April	53,458	31,001	1,711	86,170	10,024	22,868	2,432	35,324	2,388	9,249	1,733	13,370
May	52,858	26,454	1,487	80,799	6,646	15,954	1,925	24,525	1,769	5,687	1,190	8,646
June	53,376	27,931	1,446	82,753	6,719	15,585	1,949	24,253	1,543	5,947	1,098	8,588
<i>June quarter 1994</i>	159,692	85,386	4,644	249,722	23,389	54,407	6,306	84,102	5,700	20,883	4,021	30,604
AVERAGE LENGTH OF STAY (days)												
<i>June quarter 1993</i>	2.6	3.0	3.2	2.7	1.8	2.0	2.4	2.0	1.9	1.8	2.1	1.9
<i>June quarter 1994</i>	2.6	3.0	3.9	2.7	2.2	2.1	2.4	2.1	1.4	1.7	1.9	1.7
TAKINGS FROM ACCOMMODATION (\$'000)												
<i>June quarter 1993</i>	21,652	8,087	290	30,029	1,366	3,147	330	4,844	365	1,013	161	1,539
<i>1994</i>												
April	8,985	3,262	118	12,365	744	1,627	119	2,489	155	458	70	683
May	8,666	2,970	108	11,743	435	1,022	81	1,538	102	309	45	456
June	7,964	2,922	99	10,985	469	1,001	73	1,544	112	292	44	447
<i>June quarter 1994</i>	25,615	9,153	326	35,094	1,648	3,650	273	5,571	370	1,058	159	1,587

TABLE 6 — HOTELS, MOTELS AND GUEST HOUSES BY STATISTICAL DIVISION,
WESTERN AUSTRALIA (a)—continued

Particulars	Upper Great Southern (SD)			Midlands (SD)			South-Eastern (SD)			Total		
	Establishments with facilities		Estab. without facilities	Establishments with facilities		Estab. without facilities	Establishments with facilities		Estab. without facilities			
	Licensed hotels	Motels, etc.		Licensed hotels	Motels, etc.		Licensed hotels	Motels, etc.				
ESTABLISHMENTS, CAPACITY AND EMPLOYMENT												
June quarter 1993—												
Establishments	5	11	9	25	16	13	29	58	18	17	14	49
Guest rooms	98	158	138	394	324	259	472	1,055	585	573	406	1,564
Bed spaces	214	381	240	835	698	630	818	2,146	1,472	1,590	615	3,677
Employment (persons)	38	49	44	131	174	77	149	400	351	219	76	646
June quarter 1994												
Establishments	3	11	8	22	16	13	31	60	18	17	13	48
Guest rooms	n.p.	n.p.	111	349	326	259	536	1,121	592	582	431	1,605
Bed spaces	n.p.	n.p.	191	726	744	653	965	2,362	1,493	1,612	646	3,751
Employment (persons)	n.p.	n.p.	35	129	190	80	174	444	331	202	71	604
ROOM NIGHTS OCCUPIED												
June quarter 1993	2,498	4,502	1,499	8,499	7,118	7,589	7,673	22,380	25,979	25,043	18,017	69,039
1994—												
April	n.p.	n.p.	445	3,283	3,556	2,719	3,067	9,342	8,819	9,015	7,760	25,594
May	n.p.	n.p.	301	2,767	3,237	2,746	3,296	9,279	9,482	9,059	8,567	27,108
June	n.p.	n.p.	313	2,698	3,050	2,424	3,437	8,911	8,179	8,089	8,675	24,943
June quarter 1994	n.p.	n.p.	1,059	8,748	9,843	7,889	9,800	27,532	26,480	26,163	25,002	77,645
ROOM OCCUPANCY RATES (per cent)												
June quarter 1993	28.0	31.3	11.9	23.7	24.3	32.2	17.9	23.4	48.8	48.1	48.8	48.5
1994—												
April	n.p.	n.p.	13.4	31.4	36.4	35.0	19.1	27.8	49.7	51.6	60.0	53.2
May	n.p.	n.p.	8.7	25.6	32.0	34.2	19.8	26.7	51.7	50.2	64.1	54.5
June	n.p.	n.p.	9.4	25.8	31.2	31.2	21.4	26.5	46.1	46.3	67.1	51.8
June quarter 1994	n.p.	n.p.	10.5	27.5	33.2	33.5	20.1	27.0	49.2	49.4	63.7	53.2
GUEST NIGHTS												
June quarter 1993	3,597	6,927	2,223	12,747	10,785	12,127	9,645	32,557	37,470	39,871	21,422	98,763
1994—												
April	n.p.	n.p.	639	4,909	5,069	4,720	4,014	13,803	12,992	15,351	8,328	36,671
May	n.p.	n.p.	391	4,121	4,035	3,760	4,138	11,933	12,693	13,497	9,144	35,334
June	n.p.	n.p.	464	4,003	4,028	3,639	4,401	12,068	10,652	11,605	9,300	31,557
June quarter 1994	n.p.	n.p.	1,494	13,033	13,132	12,119	12,553	37,804	36,337	40,453	26,772	103,562
BED OCCUPANCY RATES (per cent)												
June quarter 1993	18.5	20.0	10.2	16.8	17.1	21.2	13.0	16.7	28.0	27.6	38.3	29.5
1994—												
April	n.p.	n.p.	11.2	22.5	22.7	24.1	13.9	19.5	29.0	31.7	43.0	32.6
May	n.p.	n.p.	6.6	18.3	17.5	18.6	13.8	16.3	27.4	27.0	45.7	30.4
June	n.p.	n.p.	8.1	18.4	18.0	18.6	15.2	17.0	23.8	24.0	48.0	28.0
June quarter 1994	n.p.	n.p.	8.6	19.7	19.4	20.4	14.3	17.6	26.7	27.6	45.5	30.3
GUEST ARRIVALS												
June quarter 1993	2,678	5,245	1,347	9,270	7,161	8,378	5,886	21,425	17,927	18,167	3,633	39,727
1994												
April	n.p.	n.p.	459	3,370	2,725	3,231	2,444	8,400	6,399	6,308	1,121	13,828
May	n.p.	n.p.	339	2,875	2,079	2,670	2,475	7,224	6,325	5,736	1,182	13,243
June	n.p.	n.p.	348	3,286	2,311	2,630	2,613	7,554	5,109	5,140	1,131	11,380
June quarter 1994	n.p.	n.p.	1,146	9,531	7,115	8,531	7,532	23,178	17,833	17,184	3,434	38,451
AVERAGE LENGTH OF STAY (days)												
June quarter 1993	1.3	1.3	1.7	1.4	1.5	1.4	1.6	1.5	2.1	2.2	5.9	2.5
June quarter 1994	n.p.	n.p.	1.3	1.4	1.8	1.4	1.7	1.6	2.0	2.4	7.8	2.7
TAKINGS FROM ACCOMMODATION (\$'000)												
June quarter 1993	96	187	54	337	357	396	215	968	1,449	1,538	480	3,468
1994—												
April	n.p.	n.p.	20	148	148	145	99	392	524	590	283	1,397
May	n.p.	n.p.	11	121	135	135	102	372	567	564	314	1,445
June	n.p.	n.p.	13	117	136	125	109	370	484	517	326	1,327
June quarter 1994	n.p.	n.p.	45	386	420	405	310	1,135	1,575	1,672	922	4,169

TABLE 6—HOTELS, MOTELS AND GUEST HOUSES BY STATISTICAL DIVISION,
WESTERN AUSTRALIA (a) *continued*

Particulars	Central (SD)			Pilbara (SD) and Kimberley (SD)			Western Australia			Total		
	Establishments with facilities		Estab. etc. facilities	Establishments with facilities		Estab. etc. facilities	Establishments with facilities		Estab. etc. facilities			
	Licensed hotels	Motels, etc.		Licensed hotels	Motels, etc.		Licensed hotels	Motels, etc.				
ESTABLISHMENTS, CAPACITY AND EMPLOYMENT												
<i>June quarter 1993</i>												
Establishments	23	13	17	53	25	11	9	45	162	166	136	464
Guest rooms	763	427	255	1,445	1,102	792	534	2,428	8,107	6,470	2,847	17,424
Bed spaces	1,859	1,252	493	3,604	2,553	2,061	779	5,393	19,650	17,971	4,830	42,451
Employment (persons)	353	150	69	572	726	286	73	1,085	6,681	2,341	1,085	10,107
<i>June quarter 1994—</i>												
Establishments	23	13	15	51	26	13	12	51	161	173	136	470
Guest rooms	736	429	254	1,419	n.p.	n.p.	746	2,738	8,185	6,569	3,049	17,803
Bed spaces	1,769	1,252	522	3,543	n.p.	n.p.	968	5,902	19,996	18,300	5,061	43,357
Employment (persons)	345	161	73	579	n.p.	n.p.	91	1,336	6,836	2,614	1,023	10,473
ROOM NIGHTS OCCUPIED												
<i>June quarter 1993</i>	24,571	15,618	4,247	44,436	49,449	36,415	11,397	97,261	375,572	292,019	72,023	739,614
<i>1994—</i>												
April	9,192	5,817	1,628	16,637	n.p.	n.p.	4,730	30,284	141,974	111,357	28,828	282,159
May	9,492	5,311	1,532	16,335	n.p.	n.p.	3,963	35,105	141,165	100,534	27,346	269,045
June	9,518	5,474	1,658	16,650	n.p.	n.p.	4,484	40,343	137,146	100,841	26,955	264,942
<i>June quarter 1994</i>	28,202	16,602	4,818	49,622	n.p.	n.p.	13,177	105,732	420,285	312,732	83,129	816,146
ROOM OCCUPANCY RATES (per cent)												
<i>June quarter 1993</i>	35.4	40.2	18.8	33.9	50.1	50.5	23.5	44.4	51.0	49.6	27.9	46.7
<i>1994—</i>												
April	41.6	45.2	21.4	39.1	n.p.	n.p.	21.1	37.1	57.8	56.7	31.5	52.9
May	41.6	39.9	19.5	37.1	n.p.	n.p.	17.1	41.6	55.6	49.5	28.9	48.8
June	43.1	42.5	21.8	39.1	n.p.	n.p.	20.0	49.4	55.9	51.3	29.5	49.6
<i>June quarter 1994</i>	42.1	42.5	20.8	38.4	n.p.	n.p.	19.4	42.7	56.4	52.5	30.0	50.4
GUEST NIGHTS												
<i>June quarter 1993</i>	38,911	28,612	5,864	73,387	68,734	61,462	13,003	143,199	582,639	516,772	94,104	1,193,515
<i>1994—</i>												
April	15,135	11,298	2,364	28,797	n.p.	n.p.	5,256	44,684	226,812	215,596	36,969	479,377
May	13,653	8,638	1,899	24,190	n.p.	n.p.	4,523	50,770	206,816	169,872	32,775	409,463
June	14,307	9,105	2,057	25,469	n.p.	n.p.	5,143	61,320	206,875	177,025	32,805	416,705
<i>June quarter 1994</i>	43,095	29,041	6,320	78,456	n.p.	n.p.	14,922	156,774	640,503	562,493	102,549	1,305,545
BED OCCUPANCY RATES (per cent)												
<i>June quarter 1993</i>	23.0	25.1	13.3	22.4	30.0	32.8	18.3	29.4	32.6	31.6	21.5	30.9
<i>1994—</i>												
April	28.5	30.1	15.1	27.1	n.p.	n.p.	18.1	25.3	37.8	39.3	24.3	36.9
May	24.9	22.3	11.7	22.0	n.p.	n.p.	15.1	27.8	33.4	30.0	20.9	30.5
June	27.0	24.2	13.1	24.0	n.p.	n.p.	17.7	34.7	34.5	32.3	21.6	32.0
<i>June quarter 1994</i>	26.8	25.5	13.3	24.3	n.p.	n.p.	16.9	29.3	35.2	33.8	22.3	33.1
GUEST ARRIVALS												
<i>June quarter 1993</i>	18,955	17,181	2,635	38,771	28,561	21,355	3,105	53,021	247,963	216,412	32,990	497,365
<i>1994—</i>												
April	7,305	7,174	733	15,212	n.p.	n.p.	1,023	16,473	91,991	88,500	11,656	192,147
May	6,278	5,821	632	12,731	n.p.	n.p.	1,036	19,278	87,363	71,692	10,266	169,321
June	6,973	6,238	653	13,864	n.p.	n.p.	1,324	22,783	89,516	74,383	10,562	174,461
<i>June quarter 1994</i>	20,556	19,233	2,018	41,807	n.p.	n.p.	3,383	58,534	268,870	234,575	32,484	535,929
AVERAGE LENGTH OF STAY (days)												
<i>June quarter 1993</i>	2.1	1.7	2.2	1.9	2.4	2.9	4.2	2.7	2.3	2.4	2.9	2.4
<i>June quarter 1994</i>	2.1	1.5	3.1	1.9	n.p.	n.p.	4.4	2.7	2.4	2.4	3.2	2.4
TAKINGS FROM ACCOMMODATION (\$'000)												
<i>June quarter 1993</i>	1,189	911	142	2,243	3,038	2,958	334	6,330	29,514	18,237	2,007	49,758
<i>1994—</i>												
April	449	360	48	857	n.p.	n.p.	138	2,009	12,062	7,384	895	20,341
May	452	308	39	798	n.p.	n.p.	114	2,536	11,669	6,527	815	19,011
June	479	311	42	831	n.p.	n.p.	132	2,539	11,101	6,222	838	18,161
<i>June quarter 1994</i>	1,379	979	128	2,486	n.p.	n.p.	384	7,085	34,832	20,134	2,547	57,513

(a) From December quarter 1993, establishments with fewer than 5 rooms have been formally excluded from the scope of this collection. See Explanatory Note 2 (page 24).

TABLE 7 — HOTELS, MOTELS AND GUEST HOUSES WITH FACILITIES: STATISTICAL DIVISIONS

Statistical Divisions and selected Statistical Local Areas	Establish- ments	Guest rooms	Bed spaces	Employ- ment (persons)	Room nights occupied				Room occupancy rates (per cent)			
					Apr.	May	June	June qtr	Apr.	May	June	June qtr
Belmont (C)	9	587	1,630	282	14,228	13,476	12,371	40,075	80.8	74.1	70.2	75.0
Cockburn (C) and Fremantle area (a)	6	368	875	326	8,661	6,923	6,650	22,234	78.5	60.7	60.2	66.4
Perth (C) — Inner (b)	14	1,884	4,053	1,234	35,588	38,390	39,264	113,242	63.0	65.7	69.5	66.1
Perth (C) — Other	17	2,363	6,254	1,858	54,730	54,685	51,229	160,644	77.2	74.7	72.3	74.7
Perth (C) — Total (c)	31	4,247	10,307	3,092	90,318	93,075	90,493	273,886	70.9	70.7	71.0	70.9
Rockingham (C)	4	102	246	89	1,642	1,458	1,431	4,531	53.7	46.1	46.8	48.8
South Perth (C)	7	367	1,108	180	7,873	7,188	7,342	22,403	71.5	63.2	66.7	67.1
Stirling (C) (c)	8	565	1,465	691	10,660	7,812	7,602	26,074	62.9	44.6	44.8	50.7
Wanneroo (C)	5	69	233	145	1,055	869	956	2,880	51.0	40.6	46.2	45.9
Balance	17	464	1,410	517	7,334	7,109	6,458	20,901	52.7	49.4	46.4	49.5
Perth (SD)	87	6,769	17,274	5,322	141,771	137,910	133,303	412,984	69.8	65.7	65.6	67.0
Augusta-Margaret River (S)	11	238	658	146	3,965	2,615	2,689	9,269	55.5	36.0	37.7	43.0
Bunbury (C)	13	535	1,517	422	8,479	6,617	6,658	21,754	52.8	39.9	41.5	44.7
Busseton (S)	17	542	1,708	261	9,664	5,692	5,081	20,437	59.4	33.9	31.2	41.4
Collie (S)	4	75	183	46	1,139	1,012	1,077	3,228	50.6	43.5	47.9	47.3
Mandurah (C)	7	241	749	131	3,701	2,518	2,366	8,585	51.2	33.7	32.7	39.1
Manjimup (S)	9	322	905	160	4,876	3,594	3,356	11,826	50.5	36.0	34.7	40.4
Balance	10	166	417	88	1,890	1,511	1,553	4,954	38.0	29.4	31.2	32.8
South West (SD)	71	2,119	6,137	1,254	33,714	23,559	22,780	80,053	53.0	35.9	35.8	41.5
Albany (S) and Albany (T)	11	469	1,294	147	7,951	5,575	5,337	18,863	56.5	38.3	37.9	44.2
Denmark (S)	4	71	191	20	782	518	436	1,736	36.7	23.5	20.5	26.9
Balance	8	172	408	59	1,603	1,202	1,153	3,958	31.1	22.5	22.3	25.3
Lower Great Southern (SD)	23	712	1,893	226	10,336	7,295	6,926	24,557	48.4	33.1	32.4	37.9
Narrogin (T)	3	71	163	33	939	916	810	2,665	44.1	41.6	38.0	41.2
Balance	11	167	372	61	1,899	1,550	1,575	5,024	37.9	29.9	31.4	33.1
Upper Great Southern (SD)	14	238	535	94	2,838	2,466	2,385	7,689	39.7	33.4	33.4	35.5
Dandaragan (S) and Gingin (S)	5	120	332	44	1,284	816	845	2,945	35.7	21.9	23.5	27.0
Merredin (S)	4	92	232	35	1,330	1,439	1,255	4,024	48.2	50.5	45.5	48.1
Northam (S) and Northam (T)	3	104	259	84	1,065	1,119	1,000	3,184	34.1	34.7	32.1	33.6
York (S)	3	70	180	41	575	435	512	1,522	27.4	20.0	24.4	23.9
Balance	14	199	394	66	2,021	2,174	1,862	6,057	33.9	35.2	31.2	33.4
Midlands (SD)	29	585	1,397	270	6,275	5,983	5,474	17,732	35.8	33.0	31.2	33.3
Dundas (S)	8	199	579	71	2,068	2,265	1,572	5,905	34.6	36.7	26.3	32.6
Esperance (S)	9	274	724	145	4,435	3,611	2,796	10,842	54.0	42.5	34.0	43.5
Kalgoorlie-Boulder (C)	10	529	1,412	252	9,254	10,570	10,001	29,825	58.3	64.5	63.0	62.0
Ravensthorpe (S)	3	48	143	18	534	393	390	1,317	37.1	26.4	27.1	30.2
Balance	5	124	247	47	1,543	1,702	1,509	4,754	41.5	44.3	40.6	42.1
South Eastern (SD)	35	1,174	3,105	533	17,834	18,541	16,268	52,643	50.6	50.9	46.2	49.3
Carnarvon (S)	6	265	707	103	3,047	3,624	3,908	10,579	38.3	44.1	49.2	43.9
Geraldton (C) and Greenough (S)	12	413	1,145	199	7,096	6,563	6,429	20,088	57.3	51.3	51.9	53.4
Shark Bay (S)	4	77	200	45	865	829	843	2,537	37.4	34.7	36.5	36.2
Balance	14	410	969	159	4,001	3,787	3,812	11,600	32.5	29.8	31.0	31.1
Central (SD)	36	1,165	3,021	506	15,009	14,803	14,992	44,804	42.9	41.0	42.9	42.3
Port Hedland (T)	5	242	678	150	4,287	4,756	5,553	14,596	59.0	63.4	76.5	66.3
Roeboorne (S)	5	237	562	201	4,523	4,643	4,361	13,527	63.6	63.2	61.3	62.7
Balance	9	470	949	153	4,383	5,988	6,301	16,672	32.4	42.8	46.1	40.5
Pilbara (SD)	19	949	2,189	504	13,193	15,387	16,215	44,795	47.3	53.4	57.8	52.8
Broome (S)	6	561	1,587	474	7,822	9,000	12,279	29,101	46.5	51.8	73.0	57.0
Derby-West Kimberley (S)	4	185	443	65	1,514	2,232	2,244	5,990	27.3	38.9	40.4	35.6
Balance	10	297	715	202	3,025	4,523	5,121	12,669	34.0	49.1	57.5	46.9
Kimberley (SD)	20	1,043	2,745	741	12,361	15,755	19,644	47,760	39.5	48.7	62.8	50.3
Western Australia	334	14,754	38,296	9,450	253,331	241,699	237,987	733,017	57.3	52.9	53.8	54.7

(a) The Fremantle area comprises the City of Fremantle (see paragraph 22 of Explanatory Notes) and the Town of East Fremantle. Cockburn (C) includes Rottnest Island.

(b) Bounded by (clockwise) Victoria Avenue, Riverside Drive, Mitchell Freeway, the railway line and Lord Street. (c) See paragraph 22 of Explanatory Notes.

AND SELECTED STATISTICAL LOCAL AREAS, WESTERN AUSTRALIA, JUNE QUARTER 1994

<i>Guest nights</i>				<i>Guest arrivals</i>				<i>Takings from accommodation (\$ '000)</i>			
<i>Apr.</i>	<i>May</i>	<i>June</i>	<i>June qtr</i>	<i>Apr.</i>	<i>May</i>	<i>June</i>	<i>June qtr</i>	<i>Apr.</i>	<i>May</i>	<i>June</i>	<i>June qtr</i>
26,210	22,298	21,083	69,591	10,605	9,150	9,158	28,913	773	714	666	2,153
15,199	10,382	9,830	35,411	3,984	3,571	3,334	10,889	882	689	646	2,216
55,454	58,113	62,708	176,275	22,073	23,522	25,502	71,097	2,956	3,047	2,987	8,990
88,160	81,726	78,999	248,885	27,813	26,846	26,542	81,201	5,521	5,492	5,024	16,037
143,614	139,839	141,707	425,160	49,886	50,368	52,044	152,298	8,478	8,539	8,011	25,027
2,608	2,080	1,754	6,442	733	559	382	1,674	82	72	69	223
14,753	12,268	12,761	39,782	5,520	4,332	4,907	14,759	464	416	408	1,288
19,814	14,334	14,594	48,742	6,831	5,283	6,010	18,124	1,042	714	642	2,398
2,441	1,757	1,827	6,025	1,609	1,163	1,224	3,996	88	65	71	224
13,998	12,263	10,969	37,230	5,291	4,886	4,248	14,425	438	427	374	1,239
238,637	215,221	214,525	668,383	84,459	79,312	81,307	245,078	12,247	11,635	10,886	34,768
8,189	4,844	5,217	18,250	5,484	3,621	3,633	12,738	292	171	178	642
15,483	9,891	10,658	36,032	8,072	5,586	5,705	19,363	551	392	407	1,351
25,441	12,604	11,844	49,889	7,730	5,112	4,925	17,767	741	339	340	1,420
1,786	1,357	1,398	4,541	1,098	863	907	2,868	46	44	49	139
9,737	5,111	5,267	20,115	2,499	1,855	1,678	6,032	291	176	169	636
11,554	7,508	7,563	26,625	5,911	3,988	3,722	13,621	358	267	251	876
3,065	2,267	2,496	7,828	2,098	1,575	1,734	5,407	91	68	76	235
75,255	43,582	44,443	163,280	32,892	22,600	22,304	77,796	2,370	1,457	1,471	5,298
16,192	9,012	9,342	34,546	8,939	5,471	5,766	20,176	511	337	330	1,178
1,354	977	844	3,175	951	808	571	2,330	33	22	22	76
2,707	1,643	1,694	6,044	1,747	1,177	1,153	4,077	69	52	52	173
20,253	11,632	11,880	43,765	11,637	7,456	7,490	26,583	613	411	404	1,428
1,132	1,193	978	3,303	640	726	651	2,017	36	37	31	104
3,138	2,537	2,561	8,236	2,271	1,810	2,287	6,368	92	73	73	238
4,270	3,730	3,539	11,539	2,911	2,536	2,938	8,385	128	110	104	342
2,405	1,337	1,340	5,082	1,655	1,081	1,051	3,787	64	41	37	142
2,013	1,771	1,649	5,433	1,215	1,143	1,109	3,467	55	52	50	158
1,787	1,514	1,459	4,760	1,327	1,004	980	3,311	64	68	63	195
1,077	706	1,055	2,838	783	554	872	2,209	40	27	39	106
2,507	2,467	2,164	7,138	976	967	929	2,872	71	82	71	224
9,789	7,795	7,667	25,251	5,956	4,749	4,941	15,646	293	270	261	825
3,999	4,011	2,830	10,840	3,550	3,214	2,320	9,084	121	125	95	340
8,136	5,472	4,152	17,760	3,160	2,371	1,880	7,411	238	179	133	550
13,368	14,080	12,867	40,315	4,756	5,229	4,843	14,828	630	700	662	1,992
1,050	638	661	2,349	637	517	521	1,675	22	15	15	52
1,790	1,989	1,747	5,526	604	730	685	2,019	103	113	96	313
28,343	26,190	22,257	76,790	12,707	12,061	10,249	35,017	1,114	1,132	1,001	3,247
4,919	5,255	5,983	16,157	2,814	2,811	3,326	8,951	159	185	209	554
13,081	10,090	10,427	33,598	7,369	5,653	6,033	19,055	366	323	335	1,023
1,651	1,384	1,362	4,397	1,086	994	853	2,933	75	61	63	200
6,782	5,562	5,640	17,984	3,210	2,641	2,999	8,850	209	190	183	581
26,433	22,291	23,412	72,136	14,479	12,099	13,211	39,789	809	759	790	2,358
5,762	6,119	7,260	19,141	2,983	3,272	3,488	9,743	259	288	347	894
6,066	5,612	5,771	17,449	2,387	2,230	2,496	7,113	301	327	322	951
5,391	7,897	7,901	21,189	2,366	3,187	3,388	8,941	302	359	345	1,006
17,219	19,628	20,932	57,779	7,736	8,689	9,372	25,797	863	975	1,014	2,851
15,597	16,980	24,087	56,664	4,018	4,483	5,779	14,280	688	953	837	2,478
2,156	2,951	3,215	8,322	1,314	1,801	2,136	5,251	92	142	147	381
4,456	6,688	7,943	19,087	2,382	3,269	4,172	9,823	229	353	410	991
22,209	26,619	35,245	84,073	7,714	9,553	12,087	29,354	1,009	1,448	1,393	3,850
442,408	376,688	383,900	1,202,996	180,491	159,055	163,899	503,445	19,446	18,196	17,323	54,966

TABLE 8—HOLIDAY FLATS, UNITS AND HOUSES BY STATISTICAL DIVISION, WESTERN AUSTRALIA

Particulars	Perth (SD)	South-West (SD)	Lower Great		Midlands (SD)	South- Eastern (SD)	Pilbara and Kimberley		Western Australia
			Southern (SD)	Upper Great Southern (SD)			Central (SD)	(SDs)	
LETTING ENTITIES, CAPACITY AND EMPLOYMENT									
June quarter 1993—									
Letting entities	30	21	11	—	7	4	23	3	99
Flats, units and houses									
Single bedroom	397	32	16	—	12	23	23	8	511
Multiple bedroom	629	253	88	—	49	18	414	31	1,482
Total flats, units and houses	1,026	285	104	—	61	41	437	39	1,993
Bed spaces	4,198	1,608	538	—	303	186	2,263	149	9,245
Employment (persons) (a)	218	84	25	—	11	11	73	8	430
June quarter 1994—									
Letting entities	29	27	12	—	7	5	24	2	106
Flats, units and houses									
Single bedroom	390	32	20	—	12	n.p.	48	n.p.	569
Multiple bedroom	733	307	98	—	48	n.p.	406	n.p.	1,655
Total flats, units and houses	1,123	339	118	—	60	n.p.	454	n.p.	2,224
Bed spaces	4,632	2,078	627	—	296	n.p.	2,389	n.p.	10,501
Employment (persons) (a)	224	112	29	—	12	n.p.	78	n.p.	485
UNIT NIGHTS OCCUPIED									
June quarter 1993	51,988	10,594	3,659	—	1,585	1,272	16,868	1,284	87,250
1994—									
April	23,341	6,184	2,247	—	849	n.p.	7,848	n.p.	42,409
May	17,854	3,624	1,038	—	341	n.p.	4,901	n.p.	29,371
June	19,567	3,465	848	—	328	n.p.	5,167	n.p.	31,350
June quarter 1994	60,762	13,273	4,133	—	1,518	n.p.	17,916	n.p.	103,130
UNIT OCCUPANCY RATES (per cent)									
June quarter 1993	56.1	40.8	38.7	—	28.6	34.1	42.4	36.2	48.3
1994—									
April	69.3	60.8	63.5	—	47.2	n.p.	57.6	n.p.	63.6
May	51.3	34.5	28.4	—	18.3	n.p.	34.8	n.p.	42.6
June	58.1	34.1	24.0	—	18.2	n.p.	37.9	n.p.	47.0
June quarter 1994	59.5	43.0	38.5	—	27.8	n.p.	43.4	n.p.	51.0
UNIT LETTINGS									
June quarter 1993	9,794	4,043	1,138	—	461	493	4,040	283	20,252
1994—									
April	4,011	1,838	628	—	209	n.p.	1,630	n.p.	8,846
May	3,395	1,376	369	—	139	n.p.	1,243	n.p.	6,948
June	3,797	1,399	325	—	142	n.p.	1,295	n.p.	7,468
June quarter 1994	11,203	4,613	1,322	—	490	n.p.	4,168	n.p.	23,262
AVERAGE LENGTH OF STAY (days)									
June quarter 1993	5.3	2.6	3.2	—	3.4	2.6	4.2	4.5	4.3
1994—									
April	5.8	3.4	3.6	—	4.1	n.p.	4.8	n.p.	4.8
May	5.3	2.6	2.8	—	2.5	n.p.	3.9	n.p.	4.2
June	5.2	2.5	2.6	—	2.3	n.p.	4.0	n.p.	4.2
June quarter 1994	5.4	2.9	3.1	—	3.1	n.p.	4.3	n.p.	4.4
TAKINGS FROM ACCOMMODATION (\$'000)									
June quarter 1993	2,865	656	202	—	59	63	925	66	4,836
1994—									
April	1,600	414	136	—	30	n.p.	430	n.p.	2,728
May	1,061	222	50	—	12	n.p.	255	n.p.	1,700
June	1,152	236	48	—	15	n.p.	276	n.p.	1,855
June quarter 1994	3,812	872	234	—	57	n.p.	961	n.p.	6,283

(a) Employment numbers exclude real estate agents and their employees.

TABLE 9 — HOLIDAY FLATS, UNITS AND HOUSES BY SELECTED STATISTICAL LOCAL AREAS,
WESTERN AUSTRALIA

Particulars	Rottnest Island (a)	Belmont (C)	Perth (C) (b)	Stirling (C) (b)	Albany (S) and Albany (T)	Augusta- Margaret River (S)	Busselton (S)	Gingin (S)	Northampton (S)
LETTING ENTITIES, CAPACITY AND EMPLOYMENT									
<i>June quarter 1993</i>									
Letting entities	1	4	5	6	7	5	9	4	11
Flats, units and houses									
Single bedroom	15	52	201	23	5	2	20	12	6
Multiple bedroom	232	61	4	45	63	30	117	18	270
<i>Total flats, units and houses</i>	<i>247</i>	<i>113</i>	<i>205</i>	<i>68</i>	<i>68</i>	<i>32</i>	<i>137</i>	<i>30</i>	<i>276</i>
Bed spaces	1,180	434	639	298	345	170	711	135	1,522
Employment (persons) (c)	90	13	25	15	17	16	44	7	50
<i>June quarter 1994</i>									
Letting entities	1	4	5	5	7	6	9	4	12
Flats, units and houses									
Single bedroom	15	64	207	22	5	2	20	11	6
Multiple bedroom	232	63	4	98	67	38	134	17	269
<i>Total flats, units and houses</i>	<i>247</i>	<i>127</i>	<i>211</i>	<i>120</i>	<i>72</i>	<i>40</i>	<i>154</i>	<i>28</i>	<i>275</i>
Bed spaces	1,180	464	643	567	370	216	793	128	1,535
Employment (persons) (c)	97	19	25	23	19	21	54	7	47
UNIT NIGHTS OCCUPIED									
<i>June quarter 1993</i>	<i>15,270</i>	<i>5,054</i>	<i>9,425</i>	<i>2,972</i>	<i>2,871</i>	<i>1,691</i>	<i>5,282</i>	<i>606</i>	<i>9,843</i>
<i>1994—</i>									
April	6,783	2,333	3,657	2,116	1,713	916	3,029	318	4,979
May	4,759	1,913	3,214	1,488	853	666	1,590	91	2,508
June	3,832	2,338	4,283	1,733	598	670	1,524	90	2,461
<i>June quarter 1994</i>	<i>15,374</i>	<i>6,584</i>	<i>11,154</i>	<i>5,337</i>	<i>3,164</i>	<i>2,252</i>	<i>6,143</i>	<i>499</i>	<i>9,948</i>
UNIT OCCUPANCY RATES (per cent)									
<i>June quarter 1993</i>	<i>67.9</i>	<i>49.1</i>	<i>50.5</i>	<i>54.1</i>	<i>46.4</i>	<i>58.1</i>	<i>42.4</i>	<i>22.2</i>	<i>39.2</i>
<i>1994</i>									
April	91.5	61.2	57.8	58.8	79.3	76.3	65.6	37.9	60.4
May	62.2	48.6	49.1	40.0	38.2	53.7	33.3	10.5	29.4
June	51.7	61.4	67.7	48.1	27.7	55.8	33.0	10.7	29.8
<i>June quarter 1994</i>	<i>68.4</i>	<i>57.0</i>	<i>58.1</i>	<i>48.9</i>	<i>48.3</i>	<i>61.9</i>	<i>43.8</i>	<i>19.6</i>	<i>39.8</i>
UNIT LETTINGS									
<i>June quarter 1993</i>	<i>2,585</i>	<i>1,318</i>	<i>1,978</i>	<i>542</i>	<i>895</i>	<i>617</i>	<i>1,836</i>	<i>179</i>	<i>2,379</i>
<i>1994—</i>									
April	1,008	569	771	378	467	313	873	91	991
May	895	473	745	316	291	282	595	43	719
June	666	638	1,067	335	230	298	586	36	741
<i>June quarter 1994</i>	<i>2,569</i>	<i>1,680</i>	<i>2,583</i>	<i>1,029</i>	<i>988</i>	<i>893</i>	<i>2,054</i>	<i>170</i>	<i>2,451</i>
AVERAGE LENGTH OF STAY (days)									
<i>June quarter 1993</i>	<i>5.9</i>	<i>3.8</i>	<i>4.8</i>	<i>5.5</i>	<i>3.2</i>	<i>2.7</i>	<i>2.9</i>	<i>3.4</i>	<i>4.1</i>
<i>1994—</i>									
April	6.7	4.1	4.7	5.6	3.7	2.9	3.5	3.5	5.0
May	5.3	4.0	4.3	4.7	2.9	2.4	2.7	2.1	3.5
June	5.8	3.7	4.0	5.2	2.6	2.2	2.6	2.5	3.3
<i>June quarter 1994</i>	<i>6.0</i>	<i>3.9</i>	<i>4.3</i>	<i>5.2</i>	<i>3.2</i>	<i>2.5</i>	<i>3.0</i>	<i>2.9</i>	<i>4.1</i>
TAKINGS FROM ACCOMMODATION (\$'000)									
<i>June quarter 1993</i>	<i>658</i>	<i>187</i>	<i>495</i>	<i>160</i>	<i>165</i>	<i>100</i>	<i>324</i>	<i>21</i>	<i>619</i>
<i>1994—</i>									
April	467	107	183	186	108	58	231	10	295
May	203	92	156	106	43	35	100	3	135
June	146	90	184	153	38	40	100	3	148
<i>June quarter 1994</i>	<i>816</i>	<i>288</i>	<i>523</i>	<i>445</i>	<i>189</i>	<i>132</i>	<i>431</i>	<i>16</i>	<i>578</i>

(a) Unincorporated area. (b) See paragraph 22 of Explanatory Notes. (c) Employment numbers exclude real estate agents and their employees.

TABLE 10—CARAVAN PARKS: STATISTICAL DIVISIONS AND SELECTED

Statistical Divisions and Selected Statistical Local Areas	Capacity					Total	Sites occupied by long- term guests	Other sites perman- ently reserved	Employ- ment (persons)
	Establish- ments	On-site vans	Other powered sites	Unpow- ered sites	Cabins, flats, etc.				
Armadale (C)	3	32	202	14	4	252	106		8
Cockburn (C)	4	13	490	218	73	794	317	5	22
Kalamunda (S)	3	51	243	50	23	367	176	3	11
Rockingham (C)	4	25	458	43	—	526	266	63	13
Stirling (C) (a)	3	33	188	44	22	287	132	—	11
Swan (S)	4	105	440	63	27	635	265	—	20
Wanneroo (C)	7	102	514	69	15	700	384	35	32
Balance	6	68	372	31	55	526	213	2	22
<i>Perth (SD)</i>	<i>34</i>	<i>429</i>	<i>2,907</i>	<i>532</i>	<i>219</i>	<i>4,087</i>	<i>1,859</i>	<i>108</i>	<i>139</i>
Augusta-Margaret River (S)	10	92	708	389	14	1,203	43	63	25
Bunbury (C)	3	45	309	106	40	500	120	12	16
Busselton (S)	16	122	1,421	243	175	1,961	153	373	81
Harvey (S)	7	36	289	103	28	456	43	121	15
Mandurah (C)	9	78	862	93	27	1,060	178	436	45
Manjimup (S)	8	65	337	136	23	561	35	6	26
Murray (S)	7	49	502	65	27	643	153	281	25
Waroona (S)	4	25	167	230	8	430	15	30	10
Balance	10	81	310	144	15	550	103	20	22
<i>South West (SD)</i>	<i>74</i>	<i>593</i>	<i>4,905</i>	<i>1,509</i>	<i>357</i>	<i>7,364</i>	<i>843</i>	<i>1,342</i>	<i>265</i>
Albany (S) and Albany (T)	12	129	832	506	62	1,529	159	104	46
Denmark (S)	4	34	263	164	22	483	10	12	16
Balance	10	63	408	208	19	698	33	96	26
<i>Lower Great Southern (SD)</i>	<i>26</i>	<i>226</i>	<i>1,503</i>	<i>878</i>	<i>103</i>	<i>2,710</i>	<i>202</i>	<i>212</i>	<i>88</i>
<i>Upper Great Southern (SD)</i>	<i>17</i>	<i>11</i>	<i>308</i>	<i>166</i>	<i>12</i>	<i>497</i>	<i>21</i>		<i>24</i>
Gingin (S)	6	20	376	116	8	520	2	174	20
Balance	33	76	781	337	17	1,211	124	116	54
<i>Midlands (SD)</i>	<i>39</i>	<i>96</i>	<i>1,157</i>	<i>453</i>	<i>25</i>	<i>1,731</i>	<i>126</i>	<i>290</i>	<i>74</i>
Esperance (S)	7	60	457	70	28	615	77	79	26
Kalgoorlie-Boulder (C)	7	84	454	121	159	818	532	6	34
Balance	13	42	585	296	20	943	229	40	27
<i>South Eastern (SD)</i>	<i>27</i>	<i>186</i>	<i>1,496</i>	<i>487</i>	<i>207</i>	<i>2,376</i>	<i>838</i>	<i>125</i>	<i>87</i>
Carnarvon (S)	9	89	905	115	48	1,157	114	9	39
Exmouth (S)	5	53	733	51	50	887	57	8	21
Geraldton (C) and Greenough (S)	7	124	707	206	63	1,100	194	19	46
Irwin (S)	5	43	223		40	306	14	22	13
Northampton (S)	7	50	446	235	57	788	26	20	29
Shark Bay (S)	5	29	350	29	77	485	18	8	60
Balance	16	33	474	291	27	825	87	78	27
<i>Central (SD)</i>	<i>54</i>	<i>421</i>	<i>3,838</i>	<i>927</i>	<i>362</i>	<i>5,548</i>	<i>510</i>	<i>164</i>	<i>235</i>
Ashburton (S)	5	32	271	155	20	478	46	5	16
East Pilbara (S)	5	28	259	128	59	474	72	6	26
Port Hedland (T)	3	60	482	55	15	612	149	—	21
Roeboorne (S)	7	60	657	60	21	798	102	1	36
<i>Pilbara (SD)</i>	<i>20</i>	<i>180</i>	<i>1,669</i>	<i>398</i>	<i>115</i>	<i>2,362</i>	<i>369</i>	<i>12</i>	<i>99</i>
Broome (S)	6	59	841	146	20	1,066	203	4	45
Wyndham — East Kimberley (S)	7	22	511	166	9	708	145	—	33
Balance	7	25	334	382	12	753	53	3	25
<i>Kimberley (SD)</i>	<i>20</i>	<i>106</i>	<i>1,686</i>	<i>694</i>	<i>41</i>	<i>2,527</i>	<i>401</i>	<i>7</i>	<i>103</i>
<i>Western Australia</i>									
Short-term parks	198	1,166	12,024	4,024	860	18,074	1,269	1,981	711
Long-term parks	113	1,082	7,445	2,020	581	11,128	3,900	279	403
<i>Total</i>	<i>311</i>	<i>2,248</i>	<i>19,469</i>	<i>6,044</i>	<i>1,441</i>	<i>29,202</i>	<i>5,169</i>	<i>2,260</i>	<i>1,114</i>

(a) See paragraph 22 of Explanatory Notes.

STATISTICAL LOCAL AREAS, WESTERN AUSTRALIA, JUNE QUARTER 1994

<i>Site nights occupied</i>				<i>Site occupancy rates (per cent)</i>				<i>Guest arrivals</i>				<i>Takings from accommodation (\$'000)</i>			
<i>Apr.</i>	<i>May</i>	<i>June</i>	<i>June qtr</i>	<i>Apr.</i>	<i>May</i>	<i>June</i>	<i>June qtr</i>	<i>Apr.</i>	<i>May</i>	<i>June</i>	<i>June qtr</i>	<i>Apr.</i>	<i>May</i>	<i>June</i>	<i>June qtr</i>
4,522	5,093	4,118	13,733	59.8	65.2	54.5	59.9	112	141	124	377	48	39	40	126
14,089	10,457	10,502	35,048	59.1	42.5	44.1	48.5	5,974	3,688	4,125	13,787	171	127	144	442
6,180	6,577	6,161	18,918	56.1	57.8	56.0	56.6	171	227	232	630	51	55	53	159
10,614	11,403	10,218	32,235	67.3	69.9	64.8	67.3	392	286	232	910	74	83	72	229
5,736	5,604	5,096	16,436	66.6	63.0	59.2	62.9	686	501	432	1,619	92	79	74	244
8,692	9,365	8,846	26,903	45.6	47.6	46.4	46.6	379	368	399	1,146	129	126	128	383
15,031	15,017	14,252	44,300	71.6	69.2	67.9	69.5	2,207	814	963	3,984	148	145	138	432
8,446	8,345	8,092	24,883	53.5	51.2	51.3	52.0	329	283	280	892	101	97	98	296
<i>73,310</i>	<i>71,861</i>	<i>67,285</i>	<i>212,456</i>	<i>59.8</i>	<i>56.7</i>	<i>54.9</i>	<i>57.1</i>	<i>10,250</i>	<i>6,308</i>	<i>6,787</i>	<i>23,345</i>	<i>812</i>	<i>752</i>	<i>747</i>	<i>2,311</i>
12,685	7,273	5,410	25,368	35.1	19.5	15.0	23.2	9,221	4,445	3,201	16,867	135	55	40	230
6,378	5,180	4,534	16,092	42.5	33.4	30.2	35.4	2,281	1,250	1,052	4,583	78	57	56	191
33,369	22,485	20,034	75,888	56.7	37.0	34.1	42.5	13,789	5,377	4,214	23,380	451	167	160	778
6,609	5,793	5,460	17,862	48.3	41.0	39.9	43.0	1,835	396	430	2,661	51	32	26	108
21,739	20,110	19,337	61,186	68.4	61.2	60.8	63.4	2,380	904	767	4,051	155	117	108	379
6,914	3,338	2,357	12,609	41.1	19.2	14.0	24.7	4,432	1,572	1,405	7,409	96	41	28	165
13,843	13,925	13,543	41,311	71.8	69.9	70.2	70.6	1,182	298	265	1,745	87	77	75	239
2,871	1,914	1,736	6,521	22.3	14.4	13.5	16.7	1,519	259	726	2,504	31	11	16	59
6,688	5,369	4,513	16,570	40.5	31.5	27.4	33.1	1,990	690	619	3,299	73	55	43	171
<i>111,096</i>	<i>85,387</i>	<i>76,924</i>	<i>273,407</i>	<i>50.3</i>	<i>37.4</i>	<i>34.8</i>	<i>40.8</i>	<i>38,629</i>	<i>15,191</i>	<i>12,679</i>	<i>66,499</i>	<i>1,157</i>	<i>612</i>	<i>551</i>	<i>2,320</i>
17,569	12,247	10,493	40,309	38.3	25.8	22.9	29.0	7,822	2,489	1,655	11,966	204	120	99	424
4,490	1,029	1,038	6,557	31.0	6.9	7.2	14.9	3,291	670	553	4,514	53	12	8	73
6,305	5,254	4,713	16,272	30.1	24.3	22.5	25.6	3,224	1,268	1,023	5,515	83	64	60	207
<i>28,364</i>	<i>18,530</i>	<i>16,244</i>	<i>63,138</i>	<i>34.9</i>	<i>22.1</i>	<i>20.0</i>	<i>25.6</i>	<i>14,337</i>	<i>4,427</i>	<i>3,231</i>	<i>21,995</i>	<i>340</i>	<i>197</i>	<i>167</i>	<i>704</i>
2,243	1,993	1,540	5,776	15.0	12.9	10.3	12.8	2,103	1,387	1,106	4,596	29	22	18	69
9,050	6,311	5,812	21,173	58.0	39.2	37.3	44.7	4,382	906	798	6,086	60	21	19	100
11,454	10,762	9,613	31,829	31.5	28.7	26.5	28.9	3,009	2,214	1,853	7,076	105	72	79	256
<i>20,504</i>	<i>17,073</i>	<i>15,425</i>	<i>53,002</i>	<i>39.5</i>	<i>31.8</i>	<i>29.7</i>	<i>33.6</i>	<i>7,391</i>	<i>3,120</i>	<i>2,651</i>	<i>13,162</i>	<i>165</i>	<i>92</i>	<i>98</i>	<i>356</i>
9,064	6,947	6,323	22,334	49.1	36.4	34.3	39.9	3,764	2,093	1,371	7,228	114	79	64	258
18,974	19,161	18,268	56,403	77.3	75.6	74.4	75.8	2,575	2,438	1,948	6,961	253	261	250	765
11,111	9,795	9,185	30,091	39.3	33.5	32.5	35.1	2,913	2,742	1,788	7,443	107	94	88	290
<i>39,149</i>	<i>35,903</i>	<i>33,776</i>	<i>108,828</i>	<i>54.9</i>	<i>48.7</i>	<i>47.4</i>	<i>50.3</i>	<i>9,252</i>	<i>7,273</i>	<i>5,107</i>	<i>21,632</i>	<i>474</i>	<i>435</i>	<i>403</i>	<i>1,312</i>
10,489	11,621	17,603	39,713	30.2	32.4	50.7	37.7	6,520	6,049	8,126	20,695	157	155	223	534
4,415	5,247	7,861	17,523	16.6	19.1	29.5	21.7	959	1,006	1,684	3,649	80	80	121	282
10,491	10,413	11,225	32,129	31.8	30.5	34.0	32.1	5,006	3,984	4,759	13,749	136	116	127	380
4,228	3,421	2,728	10,377	46.1	36.1	29.7	37.3	1,541	1,109	963	3,613	52	29	24	105
7,195	5,284	4,488	16,967	30.4	21.6	19.0	23.7	5,399	3,176	2,837	11,412	91	59	60	210
5,734	5,122	6,029	16,885	39.4	34.1	41.4	38.3	10,965	8,072	8,223	27,260	203	147	148	499
7,879	6,963	6,846	21,688	31.8	27.2	27.7	28.9	3,195	1,447	1,810	6,452	68	50	58	177
<i>50,431</i>	<i>48,071</i>	<i>56,780</i>	<i>155,282</i>	<i>30.3</i>	<i>28.0</i>	<i>34.1</i>	<i>30.8</i>	<i>33,585</i>	<i>24,843</i>	<i>28,402</i>	<i>86,830</i>	<i>788</i>	<i>636</i>	<i>762</i>	<i>2,186</i>
3,458	4,179	5,196	12,833	24.1	28.2	36.2	29.5	1,170	1,468	2,158	4,796	32	34	46	113
2,959	3,348	3,399	9,706	20.8	22.8	23.9	22.5	808	1,025	1,423	3,256	37	46	44	127
5,465	6,070	6,921	18,456	29.8	32.0	37.7	33.1	678	1,084	1,857	3,619	85	89	96	269
5,026	5,736	7,752	18,514	21.0	23.2	32.4	25.5	1,868	2,378	4,021	8,267	74	77	98	249
<i>16,908</i>	<i>19,333</i>	<i>23,268</i>	<i>59,509</i>	<i>23.9</i>	<i>26.4</i>	<i>32.8</i>	<i>27.7</i>	<i>4,524</i>	<i>5,955</i>	<i>9,459</i>	<i>19,938</i>	<i>228</i>	<i>247</i>	<i>283</i>	<i>758</i>
7,799	12,755	20,796	41,350	24.4	38.6	65.0	42.6	3,088	5,222	6,473	14,783	116	182	291	590
6,180	7,860	12,733	26,773	29.1	35.8	59.9	41.6	1,732	4,054	6,928	12,714	67	109	164	339
2,442	3,961	10,292	16,695	10.8	17.0	45.6	24.4	2,128	4,308	9,555	15,991	38	55	97	190
<i>16,421</i>	<i>24,576</i>	<i>43,821</i>	<i>84,818</i>	<i>21.7</i>	<i>31.4</i>	<i>57.8</i>	<i>36.9</i>	<i>6,948</i>	<i>13,584</i>	<i>22,956</i>	<i>43,488</i>	<i>221</i>	<i>346</i>	<i>552</i>	<i>1,120</i>
198,877	166,118	178,658	543,653	36.7	29.6	32.9	33.1	98,816	59,307	66,185	224,308	2,382	1,591	1,787	5,760
159,549	156,609	156,405	472,563	47.8	45.4	46.9	46.7	28,203	22,781	26,193	77,177	1,833	1,747	1,795	5,375
358,426	322,727	335,063	1,016,216	40.9	35.7	38.2	38.2	127,019	82,088	92,378	301,485	4,215	3,338	3,582	11,135

TABLE 11 — CARAVAN PARKS BY STATISTICAL DIVISION, WESTERN AUSTRALIA

Particulars	Perth (SD)			South-West (SD)			Lower Great Southern (SD)		
	Short-term	Long-term	Total	Short-term	Long-term	Total	Short-term	Long-term	Total
ESTABLISHMENTS, CAPACITY AND EMPLOYMENT									
<i>June quarter 1993</i>									
Establishments	2	32	34	48	23	71	18	9	27
Capacity									
On-site vans	n.p.	n.p.	463	330	264	594	126	101	227
Other powered sites	n.p.	n.p.	2,855	3,208	1,530	4,738	1,213	366	1,579
Unpowered sites	n.p.	n.p.	496	953	378	1,331	460	209	669
Cabins, flats, etc.	n.p.	n.p.	163	237	99	336	71	20	91
<i>Total capacity</i>	<i>n.p.</i>	<i>n.p.</i>	<i>3,977</i>	<i>4,728</i>	<i>2,271</i>	<i>6,999</i>	<i>1,870</i>	<i>696</i>	<i>2,566</i>
Sites occupied by long-term guests	n.p.	n.p.	1,685	251	572	823	98	106	204
Other sites permanently reserved	n.p.	n.p.	174	914	346	1,260	153	42	195
Employment (persons)	n.p.	n.p.	141	158	90	248	54	29	83
<i>June quarter 1994</i>									
Establishments	6	28	34	56	18	74	17	9	26
Capacity									
On-site vans	83	346	429	424	169	593	115	111	226
Other powered sites	375	2,532	2,907	3,932	973	4,905	1,082	421	1,503
Unpowered sites	104	428	532	1,215	294	1,509	530	348	878
Cabins, flats, etc.	23	196	219	281	76	357	65	38	103
<i>Total capacity</i>	<i>585</i>	<i>3,502</i>	<i>4,087</i>	<i>5,852</i>	<i>1,512</i>	<i>7,364</i>	<i>1,792</i>	<i>918</i>	<i>2,710</i>
Sites occupied by long-term guests	160	1,699	1,859	432	411	843	70	132	202
Other sites permanently reserved	70	38	108	1,199	143	1,342	162	50	212
Employment (persons)	17	122	139	210	55	265	59	29	88
SITE NIGHTS OCCUPIED									
<i>June quarter 1993</i>	<i>n.p.</i>	<i>n.p.</i>	<i>200,411</i>	<i>154,008</i>	<i>95,412</i>	<i>249,420</i>	<i>44,149</i>	<i>18,398</i>	<i>62,547</i>
<i>1994—</i>									
April	9,291	64,019	73,310	87,984	23,112	111,096	18,241	10,123	28,364
May	8,695	63,166	71,861	64,528	20,859	85,387	11,321	7,209	18,530
June	8,076	59,209	67,285	57,897	19,027	76,924	9,601	6,643	16,244
<i>June quarter 1994</i>	<i>26,062</i>	<i>186,394</i>	<i>212,456</i>	<i>210,409</i>	<i>62,998</i>	<i>273,407</i>	<i>39,163</i>	<i>23,975</i>	<i>63,138</i>
SITE OCCUPANCY RATES (per cent)									
<i>June quarter 1993</i>	<i>n.p.</i>	<i>n.p.</i>	<i>55.4</i>	<i>35.8</i>	<i>46.2</i>	<i>39.2</i>	<i>25.9</i>	<i>29.0</i>	<i>26.8</i>
<i>1994—</i>									
April	52.9	60.9	59.8	50.1	51.0	50.3	33.9	36.8	34.9
May	47.9	58.2	56.7	35.6	44.5	37.4	20.4	25.3	22.1
June	46.0	56.4	54.9	33.0	41.9	34.8	17.9	24.1	20.0
<i>June quarter 1994</i>	<i>49.0</i>	<i>58.5</i>	<i>57.1</i>	<i>39.5</i>	<i>45.8</i>	<i>40.8</i>	<i>24.0</i>	<i>28.7</i>	<i>25.6</i>
GUEST ARRIVALS									
<i>June quarter 1993</i>	<i>n.p.</i>	<i>n.p.</i>	<i>8,049</i>	<i>47,684</i>	<i>10,409</i>	<i>58,093</i>	<i>14,797</i>	<i>6,581</i>	<i>21,378</i>
<i>1994—</i>									
April	1,627	8,623	10,250	34,210	4,419	38,629	11,149	3,188	14,337
May	326	5,982	6,308	13,179	2,012	15,191	3,593	834	4,427
June	361	6,426	6,787	10,664	2,015	12,679	2,609	622	3,231
<i>June quarter 1994</i>	<i>2,314</i>	<i>21,031</i>	<i>23,345</i>	<i>58,053</i>	<i>8,446</i>	<i>66,499</i>	<i>17,351</i>	<i>4,644</i>	<i>21,995</i>
TAKINGS FROM ACCOMMODATION (\$'000)									
<i>June quarter 1993</i>	<i>n.p.</i>	<i>n.p.</i>	<i>1,991</i>	<i>1,263</i>	<i>825</i>	<i>2,088</i>	<i>566</i>	<i>171</i>	<i>737</i>
<i>1994—</i>									
April	83	729	812	924	233	1,157	253	87	340
May	77	675	752	422	190	612	133	63	197
June	72	676	747	378	172	551	107	59	167
<i>June quarter 1994</i>	<i>231</i>	<i>2,080</i>	<i>2,311</i>	<i>1,724</i>	<i>595</i>	<i>2,320</i>	<i>494</i>	<i>210</i>	<i>704</i>

TABLE 11 — CARAVAN PARKS BY STATISTICAL DIVISION, WESTERN AUSTRALIA—continued

Particulars	Upper Great Southern (SD)			Midlands (SD)			South-Eastern (SD)		
	Short-term	Long-term	Total	Short-term	Long-term	Total	Short-term	Long-term	Total
ESTABLISHMENTS, CAPACITY AND EMPLOYMENT									
<i>June quarter 1993</i>									
Establishments	14	4	18	25	11	36	12	15	27
Capacity									
On-site vans	n.p.	n.p.	7	73	28	101	57	130	187
Other powered sites	n.p.	n.p.	337	895	227	1,122	593	918	1,511
Unpowered sites	n.p.	n.p.	174	322	128	450	249	194	443
Cabins, flats, etc.	n.p.	n.p.	12	19	4	23	42	164	206
<i>Total capacity</i>	<i>n.p.</i>	<i>n.p.</i>	<i>530</i>	<i>1,309</i>	<i>387</i>	<i>1,696</i>	<i>941</i>	<i>1,406</i>	<i>2,347</i>
Sites occupied by long-term guests	n.p.	n.p.	32	39	81	120	46	691	737
Other sites permanently reserved	n.p.	n.p.	—	276	6	282	109	6	115
Employment (persons)	n.p.	n.p.	24	57	16	73	41	43	84
<i>June quarter 1994</i>									
Establishments	13	4	17	25	14	39	12	15	27
Capacity									
On-site vans	8	3	11	66	30	96	60	126	186
Other powered sites	236	72	308	908	249	1,157	605	891	1,496
Unpowered sites	144	22	166	328	125	453	282	205	487
Cabins, flats, etc.	12	—	12	20	5	25	42	165	207
<i>Total capacity</i>	<i>400</i>	<i>97</i>	<i>497</i>	<i>1,322</i>	<i>409</i>	<i>1,731</i>	<i>989</i>	<i>1,387</i>	<i>2,376</i>
Sites occupied by long-term guests	16	5	21	40	86	126	60	778	838
Other sites permanently reserved	—	—	—	287	3	290	114	11	125
Employment (persons)	18	6	24	55	19	74	38	49	87
SITE NIGHTS OCCUPIED									
<i>June quarter 1993</i>	<i>n.p.</i>	<i>n.p.</i>	<i>7,249</i>	<i>41,425</i>	<i>10,671</i>	<i>52,096</i>	<i>24,558</i>	<i>75,043</i>	<i>99,601</i>
<i>1994</i>									
April	1,875	368	2,243	17,085	3,419	20,504	11,115	28,034	39,149
May	1,599	394	1,993	13,924	3,149	17,073	8,158	27,745	35,903
June	1,272	268	1,540	12,214	3,211	15,425	7,168	26,608	33,776
<i>June quarter 1994</i>	<i>4,746</i>	<i>1,030</i>	<i>5,776</i>	<i>43,223</i>	<i>9,779</i>	<i>53,002</i>	<i>26,441</i>	<i>82,387</i>	<i>108,828</i>
SITE OCCUPANCY RATES (per cent)									
<i>June quarter 1993</i>	<i>n.p.</i>	<i>n.p.</i>	<i>15.0</i>	<i>34.8</i>	<i>30.3</i>	<i>33.8</i>	<i>28.7</i>	<i>58.7</i>	<i>46.6</i>
<i>1994—</i>									
April	15.6	12.6	15.0	43.1	27.9	39.5	37.5	67.4	54.9
May	12.9	13.1	12.9	34.0	24.8	31.8	26.6	64.5	48.7
June	10.6	9.2	10.3	30.8	26.2	29.7	24.2	63.9	47.4
<i>June quarter 1994</i>	<i>13.0</i>	<i>11.7</i>	<i>12.8</i>	<i>35.9</i>	<i>26.3</i>	<i>33.6</i>	<i>29.4</i>	<i>65.3</i>	<i>50.3</i>
GUEST ARRIVALS									
<i>June quarter 1993</i>	<i>n.p.</i>	<i>n.p.</i>	<i>5,881</i>	<i>20,883</i>	<i>1,677</i>	<i>22,560</i>	<i>10,508</i>	<i>9,086</i>	<i>19,594</i>
<i>1994—</i>									
April	1,923	180	2,103	6,867	524	7,391	5,181	4,071	9,252
May	1,227	160	1,387	2,668	452	3,120	3,028	4,245	7,273
June	948	158	1,106	2,160	491	2,651	1,927	3,180	5,107
<i>June quarter 1994</i>	<i>4,098</i>	<i>498</i>	<i>4,596</i>	<i>11,695</i>	<i>1,467</i>	<i>13,162</i>	<i>10,136</i>	<i>11,496</i>	<i>21,632</i>
TAKINGS FROM ACCOMMODATION (\$'000)									
<i>June quarter 1993</i>	<i>n.p.</i>	<i>n.p.</i>	<i>86</i>	<i>243</i>	<i>87</i>	<i>330</i>	<i>235</i>	<i>959</i>	<i>1,194</i>
<i>1994—</i>									
April	25	3	29	131	34	165	126	348	474
May	19	3	22	65	27	92	81	353	435
June	16	2	18	69	29	98	63	340	403
<i>June quarter 1994</i>	<i>60</i>	<i>9</i>	<i>69</i>	<i>266</i>	<i>90</i>	<i>356</i>	<i>271</i>	<i>1,041</i>	<i>1,312</i>

TABLE 11 — CARAVAN PARKS BY STATISTICAL DIVISION, WESTERN AUSTRALIA *continued*

Particulars	Central (SD)			Pilbara (SD) and Kimberley (SD)			Western Australia		
	Short-term	Long-term	Total	Short-term	Long-term	Total	Short-term	Long-term	Total
ESTABLISHMENTS, CAPACITY AND EMPLOYMENT									
<i>June quarter 1993—</i>									
Establishments	44	9	53	24	16	40	187	119	306
Capacity									
On-site vans	329	86	415	114	159	273	1,058	1,209	2,267
Other powered sites	2,899	698	3,597	1,543	1,559	3,102	10,622	8,219	18,841
Unpowered sites	714	195	909	1,049	349	1,398	3,928	1,942	5,870
Cabins, flats, etc.	321	30	351	102	46	148	807	523	1,330
<i>Total capacity</i>	<i>4,263</i>	<i>1,009</i>	<i>5,272</i>	<i>2,808</i>	<i>2,113</i>	<i>4,921</i>	<i>16,415</i>	<i>11,893</i>	<i>28,308</i>
Sites occupied by long-term guests	339	194	533	267	480	747	1,058	3,823	4,881
Other sites permanently reserved	130	16	146	6	6	12	1,595	589	2,184
Employment (persons)	181	37	218	129	65	194	643	422	1,065
<i>June quarter 1994—</i>									
Establishments	44	10	54	25	15	40	198	113	311
Capacity									
On-site vans	303	118	421	107	179	286	1,166	1,082	2,248
Other powered sites	3,125	713	3,838	1,761	1,594	3,355	12,024	7,445	19,469
Unpowered sites	694	233	927	727	365	1,092	4,024	2,020	6,044
Cabins, flats, etc.	324	38	362	93	63	156	860	581	1,441
<i>Total capacity</i>	<i>4,446</i>	<i>1,102</i>	<i>5,548</i>	<i>2,688</i>	<i>2,201</i>	<i>4,889</i>	<i>18,074</i>	<i>11,128</i>	<i>29,202</i>
Sites occupied by long-term guests	279	231	510	212	558	770	1,269	3,900	5,169
Other sites permanently reserved	144	20	164	5	14	19	1,981	279	2,260
Employment (persons)	197	38	235	117	85	202	711	403	1,114
SITE NIGHTS OCCUPIED									
<i>June quarter 1993</i>	<i>128,770</i>	<i>30,322</i>	<i>159,092</i>	<i>68,130</i>	<i>68,984</i>	<i>137,114</i>	<i>467,953</i>	<i>499,577</i>	<i>967,530</i>
<i>1994 --</i>									
April	39,663	10,768	50,431	13,623	19,706	33,329	198,877	159,549	358,426
May	36,981	11,090	48,071	20,912	22,997	43,909	166,118	156,609	322,727
June	44,505	12,275	56,780	37,925	29,164	67,089	178,658	156,405	335,063
<i>June quarter 1994</i>	<i>121,149</i>	<i>34,133</i>	<i>155,282</i>	<i>72,460</i>	<i>71,867</i>	<i>144,327</i>	<i>543,653</i>	<i>472,563</i>	<i>1,016,216</i>
SITE OCCUPANCY RATES (per cent)									
<i>June quarter 1993</i>	<i>33.2</i>	<i>33.0</i>	<i>33.2</i>	<i>26.7</i>	<i>35.9</i>	<i>30.6</i>	<i>31.3</i>	<i>46.2</i>	<i>37.6</i>
<i>1994 --</i>									
April	29.7	32.6	30.3	16.9	29.8	22.7	36.7	47.8	40.9
May	26.8	32.5	28.0	25.1	33.7	29.0	29.6	45.4	35.7
June	33.4	37.1	34.1	47.0	44.2	45.7	32.9	46.9	38.2
<i>June quarter 1994</i>	<i>29.9</i>	<i>34.0</i>	<i>30.8</i>	<i>29.6</i>	<i>35.9</i>	<i>32.4</i>	<i>33.1</i>	<i>46.7</i>	<i>38.2</i>
GUEST ARRIVALS									
<i>June quarter 1993</i>	<i>71,874</i>	<i>11,061</i>	<i>82,935</i>	<i>40,331</i>	<i>23,130</i>	<i>63,461</i>	<i>211,690</i>	<i>70,261</i>	<i>281,951</i>
<i>1994 --</i>									
April	30,198	3,387	33,585	7,661	3,811	11,472	98,816	28,203	127,019
May	21,931	2,912	24,843	13,355	6,184	19,539	59,307	22,781	82,088
June	24,373	4,029	28,402	23,143	9,272	32,415	66,185	26,193	92,378
<i>June quarter 1994</i>	<i>76,502</i>	<i>10,328</i>	<i>86,830</i>	<i>44,159</i>	<i>19,267</i>	<i>63,426</i>	<i>224,308</i>	<i>77,177</i>	<i>301,485</i>
TAKINGS FROM ACCOMMODATION (\$'000)									
<i>June quarter 1993</i>	<i>1,815</i>	<i>299</i>	<i>2,114</i>	<i>982</i>	<i>812</i>	<i>1,794</i>	<i>5,204</i>	<i>5,129</i>	<i>10,333</i>
<i>1994--</i>									
April	658	130	788	181	268	450	2,382	1,833	4,215
May	520	116	636	274	319	593	1,591	1,747	3,338
June	628	133	762	452	383	835	1,787	1,795	3,582
<i>June quarter 1994</i>	<i>1,806</i>	<i>380</i>	<i>2,186</i>	<i>908</i>	<i>970</i>	<i>1,878</i>	<i>5,760</i>	<i>5,375</i>	<i>11,135</i>

TABLE 12 — VISITOR HOSTELS BY STATISTICAL DIVISION, WESTERN AUSTRALIA

Particulars	Perth (SD)	South-West (SD)	Central (SD)	Kimberley (SD)	Balance of State	Western Australia
ESTABLISHMENTS, CAPACITY AND EMPLOYMENT						
<i>June quarter 1993</i>						
Establishments	17	10	7	7	10	51
Bed spaces	1,315	535	366	354	542	3,112
Employment (persons)	72	19	13	21	18	143
<i>June quarter 1994</i>						
Establishments	19	12	8	6	12	57
Bed spaces	1,190	550	436	326	617	3,119
Employment (persons)	65	21	14	23	27	150
GUEST NIGHTS						
<i>June quarter 1993</i>						
	42,436	13,878	9,944	17,808	7,247	91,313
<i>1994—</i>						
April	20,401	5,390	3,491	5,282	2,924	37,488
May	17,446	2,965	3,888	5,758	2,442	32,499
June	16,410	2,873	4,185	6,817	1,864	32,149
<i>June quarter 1994</i>						
	54,257	11,228	11,564	17,857	7,230	102,136
BED OCCUPANCY RATES (per cent)						
<i>June quarter 1993</i>						
	35.5	28.5	29.9	55.3	14.7	32.2
<i>1994—</i>						
April	57.1	32.7	26.7	54.0	15.8	40.1
May	47.3	17.4	28.8	57.0	12.8	33.6
June	46.0	17.4	32.0	69.7	10.1	34.4
<i>June quarter 1994</i>						
	50.1	22.4	29.1	60.2	12.9	36.0
GUEST ARRIVALS						
<i>June quarter 1993</i>						
	11,711	5,574	3,365	4,112	4,558	29,320
<i>1994—</i>						
April	6,108	1,924	1,340	1,446	1,515	12,333
May	4,685	1,446	1,409	1,595	1,195	10,330
June	4,392	1,230	1,507	1,613	921	9,663
<i>June quarter 1994</i>						
	15,185	4,600	4,256	4,654	3,631	32,326
AVERAGE LENGTH OF STAY (days)						
<i>June quarter 1993</i>						
	3.6	2.5	3.0	4.3	1.6	3.1
<i>1994—</i>						
April	3.3	2.8	2.6	3.7	1.9	3.0
May	3.7	2.1	2.8	3.6	2.0	3.1
June	3.7	2.3	2.8	4.2	2.0	3.3
<i>June quarter 1994</i>						
	3.6	2.4	2.7	3.8	2.0	3.2
TAKINGS FROM ACCOMMODATION (\$'000)						
<i>June quarter 1993</i>						
	535	136	98	194	68	1,031
<i>1994</i>						
April	228	51	34	60	31	404
May	195	28	39	72	24	357
June	183	25	42	84	19	353
<i>June quarter 1994</i>						
	607	104	115	216	74	1,115

EXPLANATORY NOTES

- *****
- INTRODUCTION 1 This publication contains data for Western Australia from a quarterly survey of tourist accommodation establishments. The period covered by the latest survey is the 3 months ended 30 June 1994.
- SCOPE 2 Tourist accommodation establishments currently included in the survey comprise two groups:
- Establishments which provide predominantly short-term accommodation (i.e. for periods of less than 2 months) to the general public. These include:
 - Hotels, motels and guest houses, with facilities* being hotels licensed to operate a public bar and motels, private hotels and guest houses all of which provide a bath (or shower) and toilet in most guest rooms and have breakfast available for guests.
 - Hotels and guest houses, without facilities* which do not provide a bath (or shower) and toilet in most guest rooms but do have breakfast available to guests.
- NOTE: From December quarter 1993, hotel, motel and guest house establishments with fewer than five rooms have been formally excluded from the scope of this statistical collection. This change in scope resulted in the exclusion of four establishments which in the September quarter 1993 Survey aggregates for Western Australia represented 0.9 per cent of hotel, motel and guest house establishments but accounted for less than 0.1 per cent of accommodation capacity, occupancy and takings respectively.
- Holiday flats, units and houses* (excluding establishments predominantly operated on a time share basis) which are operated by owners or managers who have sole letting rights to at least five flats, units or houses or by real estate agents for short-term letting. They are mainly self-contained in terms of cooking, bath (or shower) and toilet facilities and do not have breakfast available for guests. Data for holiday flats, units and houses include short-term owner occupation as well as paying guest occupation.
 - Visitor hostels* which provide accommodation to visitors on a bed basis (rather than by the room). This category does not include establishments providing charity type accommodation (e.g. Salvation Army hostels) nor hotels, motels and guest houses without in-room facilities which provide accommodation on a per room basis.
- *Caravan parks* which provide either predominantly short-term (i.e. for periods of less than 2 months) or predominantly long-term (i.e. for periods of 2 months or more) accommodation to the general public and which provide powered sites for caravans and toilet, shower and laundry facilities for guests.
- 3 Data collected and published for each type of establishment (other than holiday flats, units and houses) include both long-term and short-term guests at these establishments.
- 4 Establishments which provide more than one type of accommodation (e.g. a motel with attached caravan park) are treated as two or more separate establishments. However, self-contained units, flats, cabins, etc. attached to hotels, motels or to caravan parks are included in the capacity for those establishments and not treated as separate holiday flat, unit or house establishments.
- DEFINITIONS
- 5 *Number of establishments.* For hotels, motels and guest houses, caravan parks and visitor hostels, the number of establishments within the scope of the survey which operated for any part of the survey period, or which closed temporarily for the quarter for seasonal reasons.
- 6 *Number of letting entities.* For holiday flats, units and houses, the number of owners, managers or real estate agents within the scope of the survey who operated for any part of the survey period.
- 7 Capacity in terms of *Guest rooms, Bed spaces, Holiday units* or *Caravan park sites, etc.* is the maximum number available to accommodate paying guests during the survey period. Capacity closed temporarily for seasonal reasons is included.
- 8 *Bed spaces.* Three-quarter beds are counted as one bed space; double beds as two bed spaces. Cots are excluded.

EXPLANATORY NOTES --continued

DEFINITIONS --continued

9 *Total caravan park capacity* comprises *On-site vans, Other powered sites, Unpowered sites and Cabins, etc.*

10 *Room nights available.* The number of guest rooms available multiplied by the number of days for which they were available during the survey period. Includes operating periods only for establishments closing (other than for seasonal reasons) or opening during the survey period.

11 *Occupancy in terms of Room nights, Unit nights or Site nights occupied* refers to the total number of nights each guest room, holiday unit or caravan park site, etc. was occupied during the survey period.

NOTE: From September quarter 1992, caravan park sites, etc. permanently reserved for 2 months or more at the end of the survey period but only casually occupied by their tenants have been recorded continuously as *Site nights occupied* irrespective of whether the tenants of individual sites were in residence on any particular night. (See also paragraph 14 below). Previously, usage of these sites was recorded as *Site nights occupied* only when their tenants were in the park. Total site occupancy rates from September quarter 1992 are therefore not comparable with those from previous quarters.

12 *Occupancy in terms of Guest nights* refers to the total number of nights each paying guest stayed during the survey period.

13 *Sites occupied by long-term guests.* The total number of sites, etc. occupied at the end of the survey period by guests who have stayed continuously for 2 months or more.

14 *Other sites permanently reserved.* The total number of powered and unpowered sites, on-site vans and cabins, etc. continuously let for 2 months or more by the end of the survey period to tenants who occupy the sites only on a casual or sporadic basis. Separate data for this item are available only from September quarter 1992.

15 *Occupancy rates* represent occupancy expressed as a percentage of total capacity available during the survey period -- e.g.

$$\text{Room occupancy rate (\%)} \text{ for the period} = \frac{\text{Room nights occupied}}{(\text{Guest rooms}) \times (\text{No. of days in the period})} \times 100$$

providing that, for establishments closing (other than for seasonal reasons) or opening during the period, the denominator of the above expression includes only operating periods.

16 *Guest arrivals.* The total number of paying guests counted only on the first night they stayed at the accommodation establishment.

17 *Unit lettings.* The total number of times a holiday flat, unit or house was occupied by a new tenant, counted only on the first night it was occupied by the new tenant.

18 *Average length of stay* is expressed in number of days and is calculated:

- for hotels, motels and guest houses and for visitor hostels, by dividing *Guest nights* by *Guest arrivals* and
- for holiday flats, units and houses, by dividing *Unit nights occupied* by *Unit lettings*.

19 *Takings from accommodation.* Revenue received from the provision of accommodation. Takings from meals are excluded. Takings from accommodation for each month generally represent the takings received during that month. Where payments are received in advance of, or after, the provision of accommodation to guests, the monthly figure for takings from accommodation may not necessarily bear a direct relationship to the number of guests accommodated during the month. Rental and storage fees paid to caravan parks for the keeping of private vans in parks are included in the takings of the month they are received.

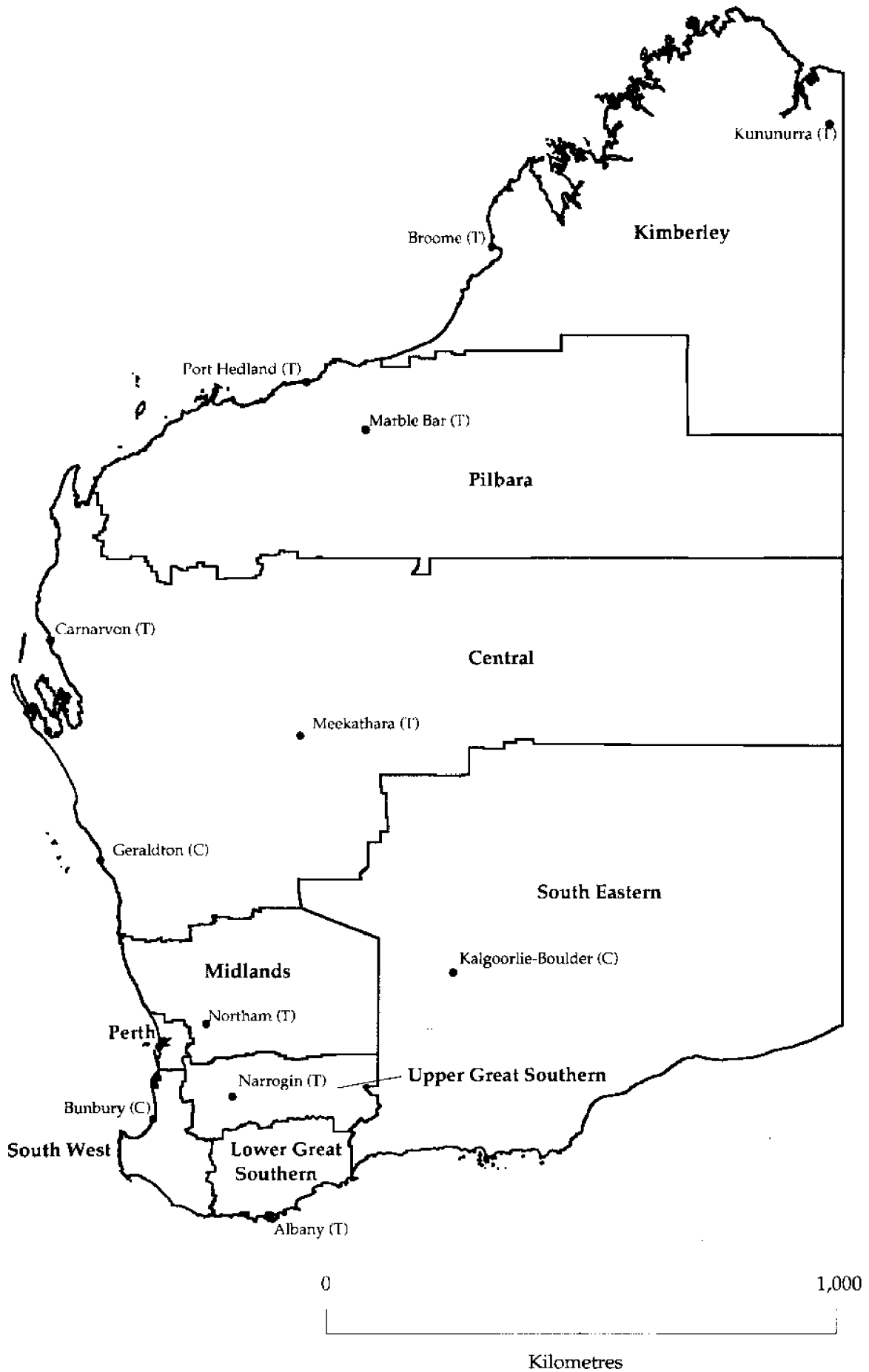
20 *Star grading.* The grading of hotels and motels with facilities based on the classification system used by members of the Australian Automobile Association (AAA). The gradings are allocated according to a points system based on the amenities and facilities available to guests. Details of the grading scheme are contained in the

EXPLANATORY NOTES—*continued*

DEFINITIONS — <i>continued</i>	<p>RACV-RAASA members' publication <i>Accommodation Australia</i>, or the individual tour guides produced by members of the AAA. For the purpose of classifying establishments to a star grading in this publication, 'half' star gradings are ignored (e.g. a two and a half star grading has been shown as two star).</p> <p>21 <i>Employment.</i> The number of persons working at accommodation establishments at the end of the survey period (including working proprietors and those working on other than accommodation activities).</p>
AUSTRALIAN STANDARD GEOGRAPHICAL CLASSIFICATION	<p>22. Statistics presented in this publication have been classified according to the Australian Standard Geographical Classification (ASGC), Edition 2.3. This classification incorporates a number of hierarchic structures of geographic areas. The appropriate spatial units of the main structure of the ASGC used in this publication are defined as follows.</p> <p><i>Statistical Local Areas (SLAs)</i> are the smallest areas for which tourist accommodation data are presented. They are directly comparable with legal Local Government Areas except for the Cities of Perth, Fremantle and Stirling which are obtained by aggregating component Statistical Local Areas.</p> <p><i>Statistical Subdivisions (SSDs).</i> These consist of one or more SLAs and form the intermediate size spatial unit for the presentation of regional data.</p> <p><i>Statistical Divisions (SDs).</i> These consist of one or more SSDs. The divisions are designed to be relatively homogeneous regions characterised by identifiable social and economic units within the region, under the unifying influence of one or more major towns or cities.</p> <p>For more detailed information, refer to the ASGC (1216.0).</p>
UNPUBLISHED STATISTICS	<p>23 The ABS may make available on request certain unpublished tourist accommodation statistics. A charge may be made for this information.</p>
RELATED PUBLICATIONS	<p>24 Publications for Australia, and each State and Territory, are released by the respective offices of the ABS. Tourist accommodation statistics for past quarters are available on request.</p> <p>25 Other ABS publications which may be of interest include:</p> <p style="padding-left: 40px;"><i>Directory of Tourism Statistics, 1991</i> (1130.0) (irregular)</p> <p style="padding-left: 40px;"><i>Overseas Arrivals and Departures, Australia</i> (3401.0) (monthly)</p> <p style="padding-left: 40px;"><i>Tourism Indicators Australia</i> (8634.0) (quarterly)</p> <p style="padding-left: 40px;"><i>Tourist Accommodation, Australia</i> (8635.0) (quarterly)</p> <p>26 Current publications produced by the ABS are listed in the <i>Catalogue of Publications and Products</i> (1101.0). The ABS also issues the <i>Publications Advice</i> (1105.0) on Tuesdays and Fridays which lists publications to be released in the next few days. Both the <i>Catalogue</i> and <i>Publications Advice</i> are available from any ABS office.</p>
SYMBOLS AND OTHER USAGES	<p>n.a. not available</p> <p>n.p. not available for publication but included in totals where applicable</p> <p>r figure or series revised since previous issue</p> <p>.. not applicable</p> <p>— nil or rounded to zero</p> <p>(C) City</p> <p>(T) Town</p> <p>(S) Shire</p> <p>27 Where figures have been rounded, discrepancies may occur between totals and the sums of the component items.</p>

P. C. KELLY
Deputy Commonwealth Statistician
and Government Statistician

STATISTICAL DIVISIONS, WESTERN AUSTRALIA





For more information...

The ABS publishes a wide range of information on Australia's economic and social conditions. Details are available in the *Catalogue of Publications and Products* is available from any of our Offices (see below for contact details).

Information Consultancy

Information tailored to special needs of clients or in-depth data investigations are provided by the ABS Information Consultancy Services in each of our Offices (available via the contacts below).

National Dial-a-Statistic Line

0055 86 400

(Steadycom P/L premium rate 25c/21.4 secs.)

This number gives 24 hours access, 365 days a year for a range of statistics.

Electronic Data Services

A growing range of our data is available on electronic media. Our Telestats service delivers major economic publications ready to download into your computer on the day of release. Our Ausstats service enables on-line access to a data base of thousands of up-to-date time series. Selected datasets are also available on diskette or CD-rom. For more details on our electronic services, contact Information Services in any of our Offices on the numbers below.

Bookshops and Subscriptions

There are now over 500 titles available from the ABS Bookshops in each of our Offices. The ABS also provides a subscription mailing service through which nominated publications are provided by mail at no additional cost. (Telephone Publications Subscription Service toll free on 008 02 0608 Australia wide).

Sales and Inquiries

Regional Offices

Bookshop Sales

SYDNEY
MELBOURNE
BRISBANE
PERTH
ADELAIDE
HOBART
CANBERRA

Information Enquiries

(02) 268 4611	268 4620
(03) 615 7000	615 7829
(07) 222 6531	222 6350
(09) 360 5140	360 5307
(08) 237 7100	237 7582
(002) 20 5800	20 5800
(06) 207 0326	207 0326

